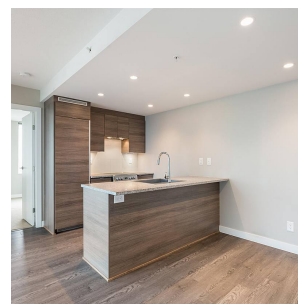
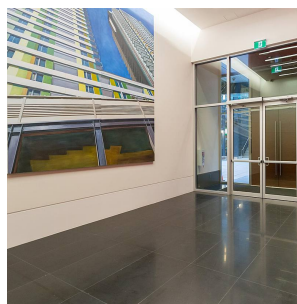
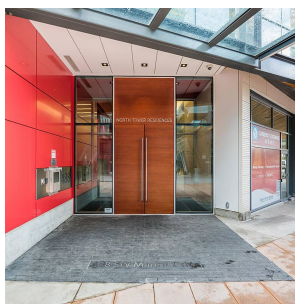
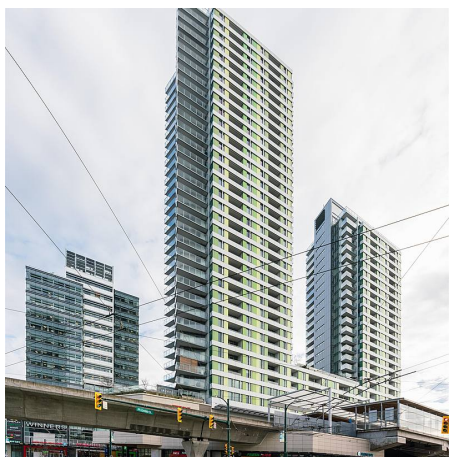


# 2207 488 Sw Marine Drive, Vancouver

\$599,900



**BRIGHT AND OPEN CONCEPT 1 BEDROOM AT MARINE GATEWAY** - An iconic architectural statement and stunning addition to Vancouver's skyline, which sits atop the popular Vancouver community of Marpole, at the southeast corner of SW Marine Drive and Cambie Street next to the Marine Drive SkyTrain station. Marine Gateway is LEED certified and includes laminate flooring, gourmet kitchens, sleek stainless steel appliances, granite countertops, ceramic tile backsplashes, and Kohler fixtures and faucets. A generous balcony and stunning views of the city and mountains. Just steps from all your daily conveniences and within 10 mins away from downtown Richmond, YVR, Oakridge Mall and Vancouver's Downtown. **1 PARKING & 1 STORAGE**. Open house by appointment Sat Feb 12 and Sun Feb 13 from 2-4pm.

## KEY INFORMATION

MLS® R2650247

Residential Attached

Marpole

1 Bedroom

1 Bathroom

543 SF

\$306.27 Maintenance Fees

## FEATURES

Year Built: 2015

Views: MOUNTAIN AND CITY VIEWS

Listed By: rennie & associates realty ltd.



**Calvin Kan** PREC\*  
604.616.8373  
ckan@rennie.com  
rennie.com/calvinkan

**rennie**