

# 10240 Michel Place, Surrey

\$3,800,000



Fantastic investment/development opportunity: an actual duplex(10240-10242 Michel Pl.) on a site of nearly 20,000 sqft located in the rapidly growing metropolis core center of Surrey. The house was considerably remodeled in 2017, with new fence installed around the property. It's up to your option: Buy it today to hold with considerable rental cash flow, or develop with the neighbors. The scarce of big developable land lots in Surrey City Center makes this property the dream of almost every investor and developer. Act today to secure it.

## KEY INFORMATION

MLS® R2649595

Residential Detached

Whalley

6 Bedrooms

2 Bathrooms

2,200 SF

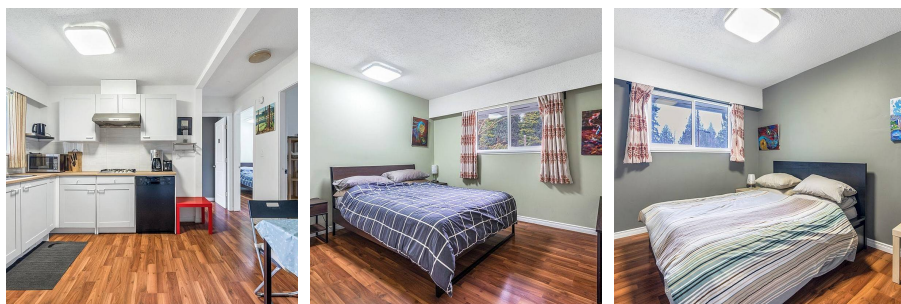
19,645 SF Lot



## FEATURES

Year Built: 1977

Listed By: Homelife Benchmark Titus Realty



rennie