

# 45322 Park Drive, Chilliwack

\$1,400,000



**DEVELOPER ALERT.** For more development information contact Realtor. If not a developer, this parcel has everything a family could ask for. Safety, Quiet neighbours and neighbourhood, a park for the kids an arms length away, and an amazing massive back yard. This house has 3 Bedrooms and 2 Bathrooms, newly renovated interior, Brand new roof from summer 2021, brand new Hot water tank and much more. Don't miss out on this opportunity.

## KEY INFORMATION

MLS® R2650776

Residential Detached

Chilliwack

3 Bedrooms

2 Bathrooms

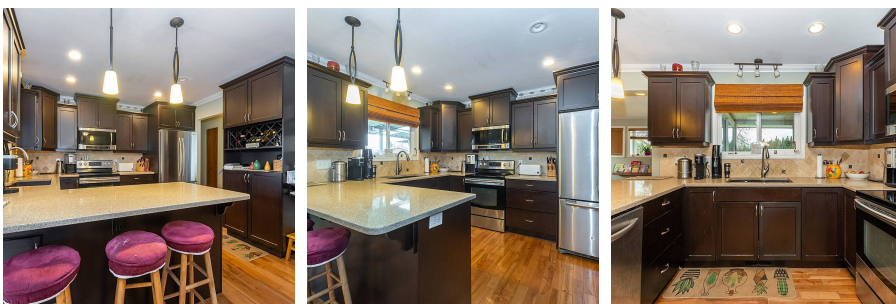
2,211 SF

15,844 SF Lot

## FEATURES

Year Built: 1973

Listed By: Century 21 Creekside Realty  
(Luckakuck)



**rennie**