

# 105 6688 Pearson Way, Richmond

\$2,138,000



CONCRETE, BRIGHT AND HUGE TOWNHOME OVER 1700SQ. FT. AT THE PRESTIGIOUS WATERFRONT COMMUNITY AT 2 RIVER GREEN BY AWARD-WINNING ASPAC! MOUNTAIN VIEWS, 3 BDR PLUS DEN/STUDY, 3 BATHROOMS, LARGE PATIO AND BALCONY, 2 SIDE BY SIDE EV PARKING AND A LOCKER, HIGH CEILINGS. AIR CONDITIONING,/CENTRAL HEAT. MIELE APPLIANCES, BANG OLUFSEN SYSTEM, QUARTZ COUNTERS AND HARDWOOD FLOORS. 24/7 CONCIERGE, PRIVATE SHUTTLE, TAICHI GARDENS, INDOOR SWIMMING POOL, HOT TUB/SAUNA/STEAM ROOM, FITNESS CENTER, YOGA/DANCE ROOM, MUSIC, STUDY AND CLUB ROOMS. JUST STEPS TO THE DYKE, OVAL, CANADA LINE, T&T AND RESTAURANTS.

## KEY INFORMATION

MLS® R2651124

Residential Attached

Brighthouse

3 Bedrooms

3 Bathrooms

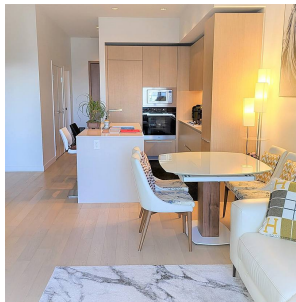
1,710 SF

## FEATURES

Year Built: 2021

Views: MOUNTAINS

Listed By: Royal Pacific Riverside Realty Ltd.



rennie