

# 35055 Kootenay Drive, Abbotsford

\$1,299,000



**BEST LOCATION IN ABBOTSFORD!!** A beautiful renovated basement entry style home in excellent condition. This is newly painted and renovated home has 6 bedrooms & 3 full bathrooms. Main floor includes 3 bedrooms, good size master bedroom with closet & kitchen with a built-in custom farmhouse-style nook and a sliding barn door. Basement has 3 bedrooms, renovated kitchen with Rec Room. Fully fenced backyard. Close to all levels of school i.e. Abby Christian school. **OPEN HOUSE: May 21 -SATURDAY** from 2-4 pm.

## KEY INFORMATION

MLS® R2651087

Residential Detached

Abbotsford East

6 Bedrooms

3 Bathrooms

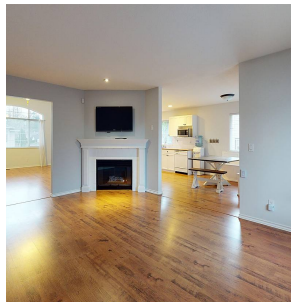
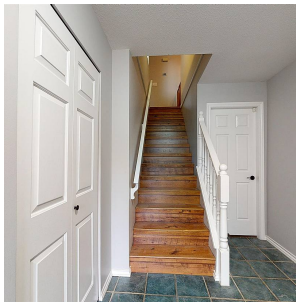
2,563 SF

5,812 SF Lot

## FEATURES

Year Built: 1997

Listed By: Planet Group Realty Inc.



rennie