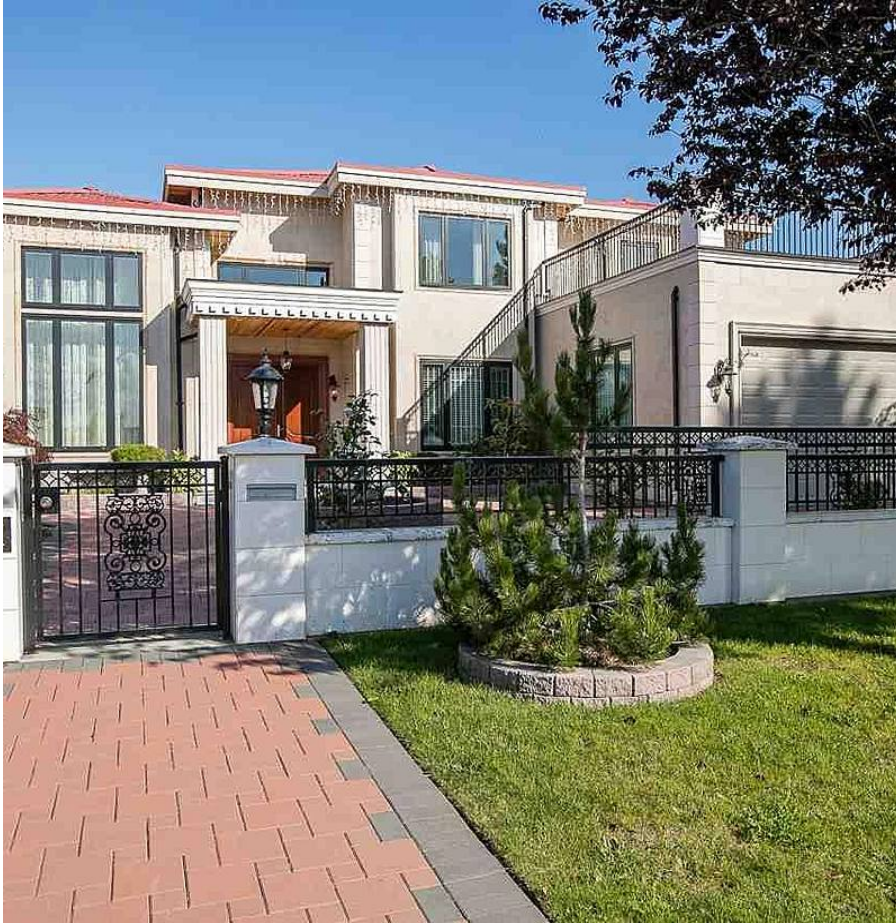


7531 Sunnymede Crescent, Richmond

\$3,880,000



THIS GORGEOUS HOUSE ON 7844 SQFT LOT IN PRESTIGIOUS NEIGHBOURHOOD BROADMOOR. IT'S DESIGNED TO OFFER A HIGH-QUALITY MODERN LIVING SPACE OF 3603 SF. OPEN-CONCEPT LIVING/DINING SPACE WHICH FEATURES OUTSTANDING LIGHT & AIR. HARDWOOD AND TILE FLOORING THROUGHOUT. SPACIOUS KITCHEN WITH WOK KITCHEN, NOOK AREA, ISLAND & HIGH-END SS APPLIANCES MIELE, FOUR ENSUITE BDRMS UPSTAIRS. 1 BDRM/ MEDIA ROOM ON MAIN FLOOR. ACROSS FROM FERRIS ELEMENTARY. SCHOOLS NEARBY: BLUNDELL ELEM. & RICHMOND SEC. 5 MIN DRIVE TO BLUNDELL CENTRE, LIBRARY, MINORU PARK, RICHMOND CENTRE, ALL AMENITIES, ANY SERVICE / RETAILS ON NO. 3 ROAD & MUCH MORE. PERFECT COMBINATION OF LUXURY AND LIVABILITY. ACT QUICKLY!

KEY INFORMATION

MLS® R2651506

Residential Detached

Broadmoor

5 Bedrooms

6 Bathrooms

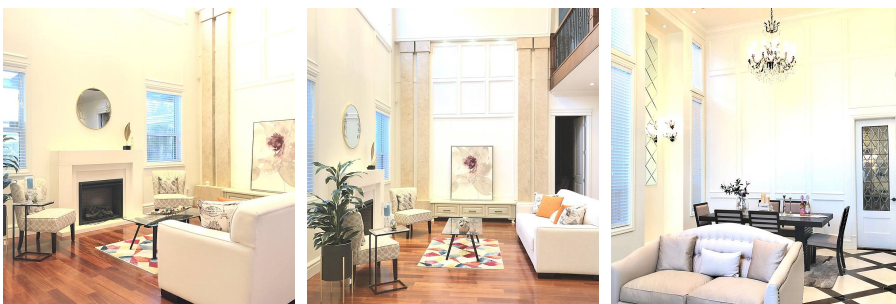
3,603 SF

7,844 SF Lot

FEATURES

Year Built: 2015

Listed By: Royal Pacific Riverside Realty Ltd.



rennie