

1108 4118 Dawson Street, Burnaby

\$795,000



Welcome to this amazing 2 bed / 2 bath SW facing corner home in Tandem 1! Super convenient location, directly across the street from Gilmore Skytrain. This well built home offers quiet & comfortable living in a concrete building w/ expansive views from every room. Upgraded flooring and new paint throughout. Spacious floor plan design with bedrooms on opposite sides of living area. Kitchen boasts abundant storage, granite countertops, and S/S appliances. Fantastic amenities are waiting for you at Tandem - clubhouse with garden terrace & boardroom, exercise room, hot tub, and sauna & steam rooms. Includes 1 parking + 1 storage locker.

KEY INFORMATION

MLS® R2652419

Residential Attached

Brentwood Park

2 Bedrooms

2 Bathrooms

876 SF

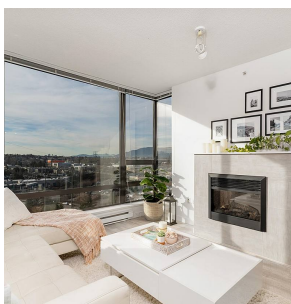
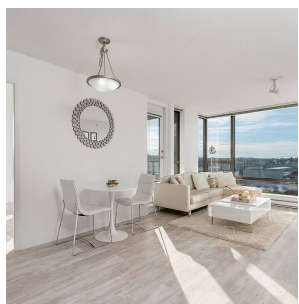
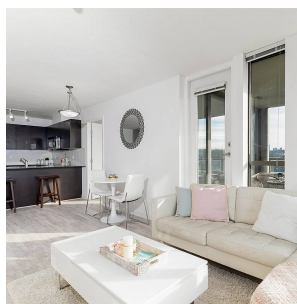
\$410.83 Maintenance Fees

FEATURES

Year Built: 2006

Views: City/Mountains

Listed By: rennie & associates realty ltd.



Julian Proctor
604.220.6924
jproctor@rennie.com
rennie.com/julianproctor



Sara Beikoghli
778.680.8685
sbeikoghli@rennie.com
rennie.com/sarabeikoghli

rennie