

15824 95a Avenue, Surrey

\$1,599,900



Fabulous location in desirable Fleetwood. Inside quiet street ultimate privacy, North facing home with sunny south backyard. No Neighbor on westside nor Northside. Direct access to Green Timber walking trail. Close to Guildford Mall, Future Skytrain, Tynehead Park, and schools. 2 car garage with outdoor shed in backyard for storage, 1 bedroom in-law suite on main floor can be used as mortgage helper. New roof, perfect to raise a family or build your dream house.

KEY INFORMATION

MLS® R2652780

Residential Detached

Fleetwood Tynehead

4 Bedrooms

3 Bathrooms

2,592 SF

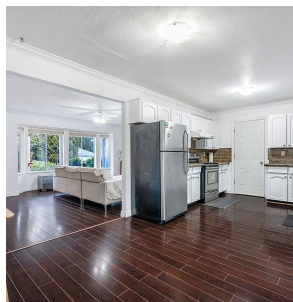
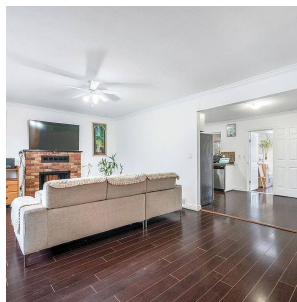
7,091 SF Lot

FEATURES

Year Built: 1983

Views: Mountain

Listed By: Royal Pacific Realty Corp.



rennie