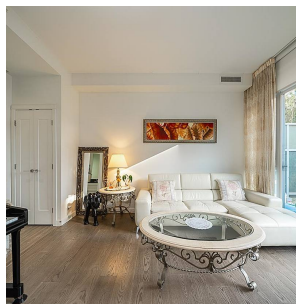
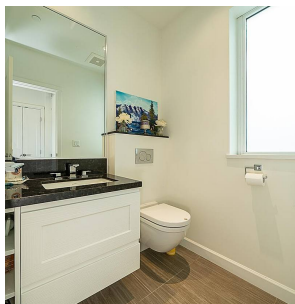
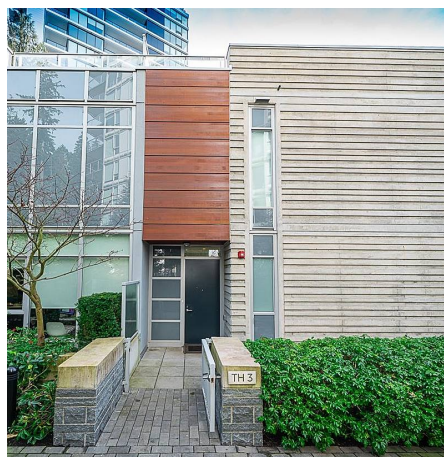


# Th3 3355 Binning Road, Vancouver

\$2,195,000



"Binning Tower" by award-winning Wall Group Companies and designed by award winning IBI Group Architects located in heart of Wesbrook with walking distance to Wesbrook Village, Pacific Spirit Regional Park, U-Hill Elementary & Secondary, and of course UBC Campus. CONCRETE construction offers BRIGHT 3 bed + den townhome floor plan with front and back patios plus 605sqft roof top deck. Private gated 2 cars side-by-side garage. Features include maxed out gourmet kitchen with luxurious Gaggenau appliances and show piece centre island, rich engineered hardwood flooring, and floor to ceiling windows! Short walking distance to U-Hill Secondary School, Save-On-Foods, banks and restaurants. This is the one you must see!

## KEY INFORMATION

MLS® R2652615

Residential Attached

University

3 Bedrooms

3 Bathrooms

1,930 SF

## FEATURES

Year Built: 2016

Listed By: Pacific Evergreen Realty Ltd.

rennie