

1609 520 Como Lake Avenue, Coquitlam

\$899,000



THE "CROWN" IN BURQUITLAM. WELL-BUILT HI-RISE BY BEEDIE LOCATED IN THE HEART OF WEST COQUITLAM. 3 BED, 2 BATH, 1009 SQFT, SW FACING CORNER UNIT W/ BALCONY OF MOUNTAIN VIEWS! OPEN CONCEPT LAYOUT WITH OPEN KITCHEN W/ QUARTZ COUNTERTOP BREAKFAST BAR, S/S APPLIANCES BY BOSCH & FISHER & PAYKEL, LAMINATE FLOORING AND FLOOR TO CEILING WINDOW WITH ROLLER SHADES. CONVENIENT AND ACCESSIBLE LOCATION, WALKABLE DISTANCE TO BURQUITLAM STATION (EVERGREEN LINE). CLOSE TO LOUGHEED TOWN CENTRE, VANCOUVER GOLF CLUB AND SIMON FRASER UNIVERSITY. AMENITIES INCL. GYM, YOGA ROOM, PARTY ROOM, GUEST SUITE, OUTDOOR BBQ AREA.

KEY INFORMATION

MLS® R2654001

Residential Attached

Coquitlam West

3 Bedrooms

2 Bathrooms

1,009 SF

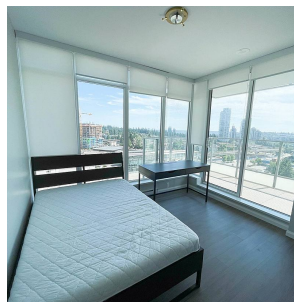
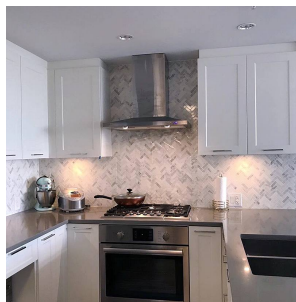
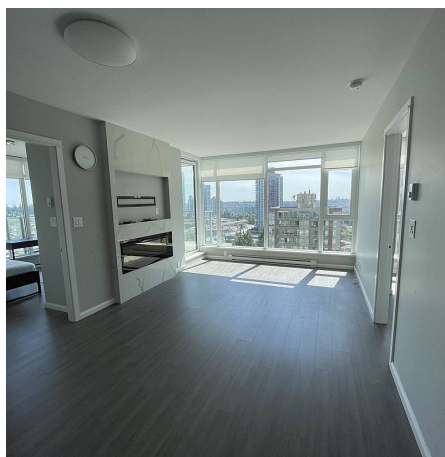
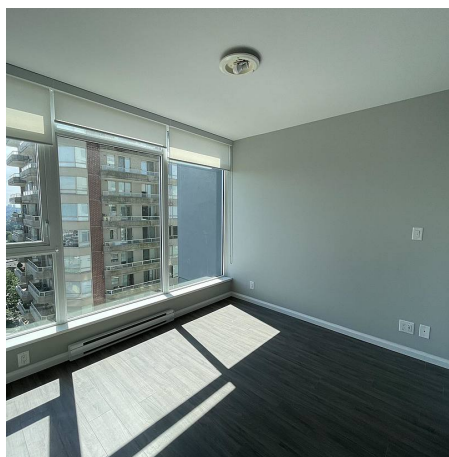
\$461.63 Maintenance Fees

FEATURES

Year Built: 2017

Views: MOUNTAIN

Listed By: Interlink Realty



rennie