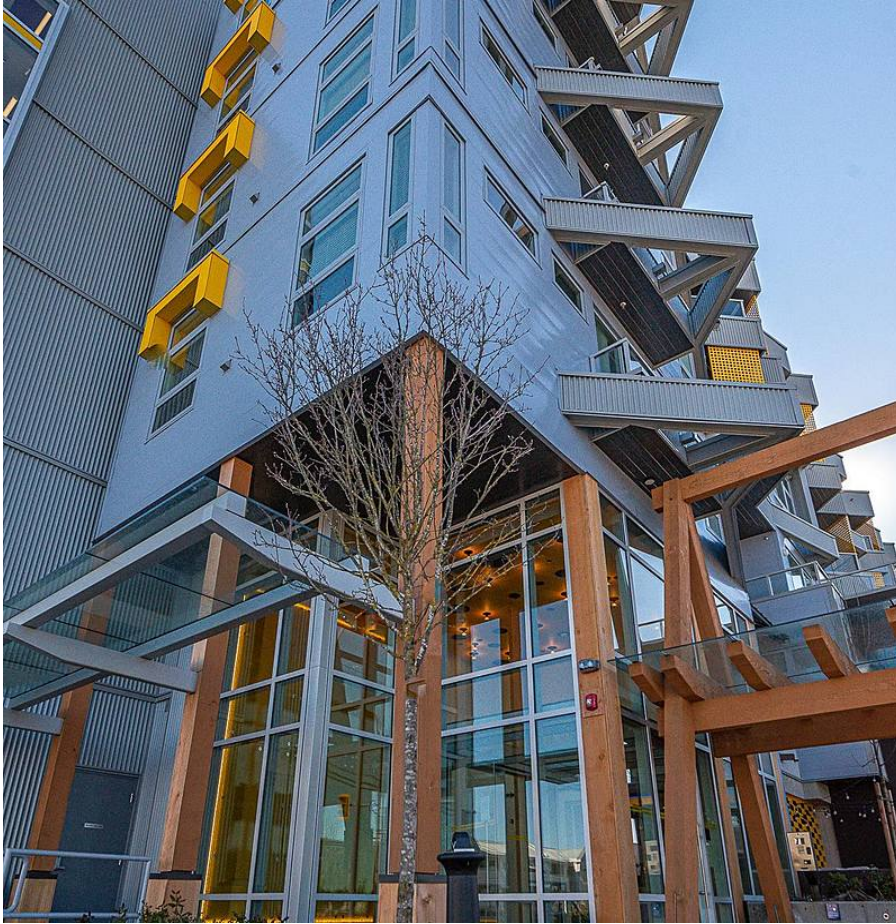


512 32828 Landeau Place, Abbotsford

\$675,000



Urban living at its best! This contemporary condo is situated in Central Abbotsford. It is within walking distance of the mall, Mill Lake and schools. THE COURT LIVING building was built with Scandinavian design in mind....it includes 2 spacious bedrooms plus flex space, 2 bathrooms, stainless steel appliances, polished quartz countertops, and modern cabinetry. There is laminate flooring, 2 secured parking stalls, a storage locker, and a secured resident bicycle room. Take advantage of the keyless FOB entry and NO GST. Strata allows pets and rentals with restrictions. Strata fees are \$340.61 per mo.

KEY INFORMATION

MLS® R2653486

Residential Attached

Central Abbotsford

2 Bedrooms

2 Bathrooms

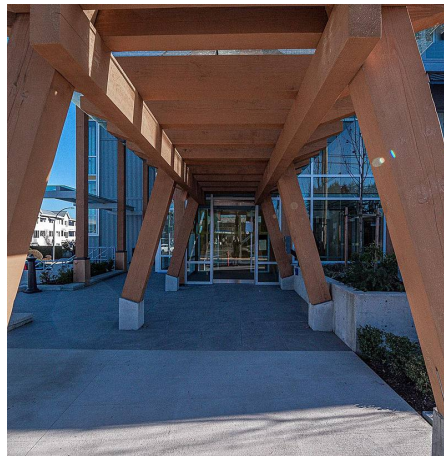
932 SF

\$340.61 Maintenance Fees

FEATURES

Year Built: 2021

Listed By: Royal LePage Preferred Realty



rennie