

709 3300 Ketcheson Road, Richmond

\$999,880



Welcome to Concord Garden Park Estates II. A 3 bed, 2 bath corner beauty with Mountain & City Views! This unit features a beautiful open layout w/ ample amount of natural light throughout the home, LED lighting, laminate flooring, central heating/cooling system to enjoy, & high end stainless steel appliances in the kitchen w/ large island that is perfect for entertaining. Surrounded by award winning landscaping design w/ a stunning garden & running water + playground. Enjoy Diamond Club amenities: Basketball court, badminton court, yoga room, fitness center, movie theatre, bowling alley, library, indoor swimming pool, sauna/steam room & hot tub. Beautifully & efficiently built by Concord Pacific. 2min walk to Capstan Skytrain (comp 2023), close to transit, restaurants, shops & services!

KEY INFORMATION

MLS® R2654003

Residential Attached

West Cambie

3 Bedrooms

2 Bathrooms

1,025 SF

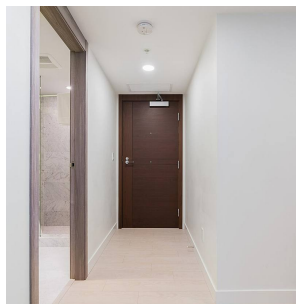
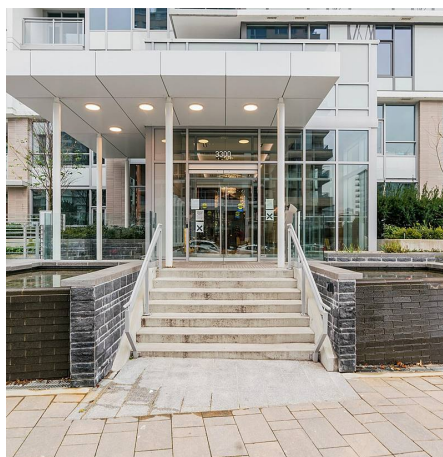
\$500.00 Maintenance Fees

FEATURES

Year Built: 2020

Views: Mountain & City

Listed By: Royal LePage Brent Roberts Realty



rennie