

# 1304 8725 University Crescent, Burnaby

\$799,000



Crescent Court by Liberty Homes! Featuring a large 2 bed/2bath corner unit with **PHENOMENAL VIEWS!!** Southeast facing **VIEWS** of Mt Baker, Portmann Bridge, New Westminster, Metrotown and some Downtown views!! High ceilings! Enjoy the views on your huge wrap around balcony! 1 parking & 1 storage included. EV charging available. SFU Living! Steps to Starbucks, Nesters Market, Tim Hortons, A&W, Poke Bar, BC Liquor store & more! Right in the heart of Burnaby finest parks and trails; Barnet Park, Burnaby Mountain/Trans Canada/Velodrome Trails, Mountain Air Bike Skills Park & Bby Mtn Golf Course/Driving Range. School Catchments: University Highlands Elementary & Burnaby Mountain Secondary. Close to SFU Childcare Society, an amazing daycare for families with little ones. Est completion Oct 31, 2022.

## KEY INFORMATION

MLS® R2654689

Residential Attached

Simon Fraser University

2 Bedrooms

2 Bathrooms

940 SF

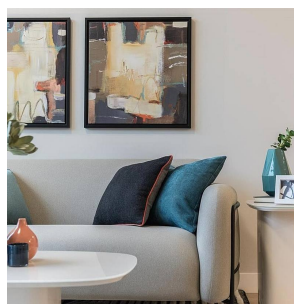
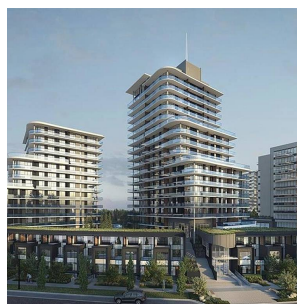
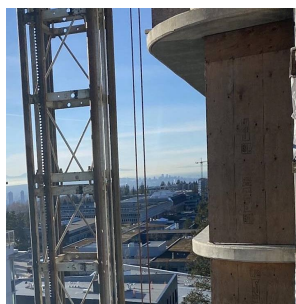
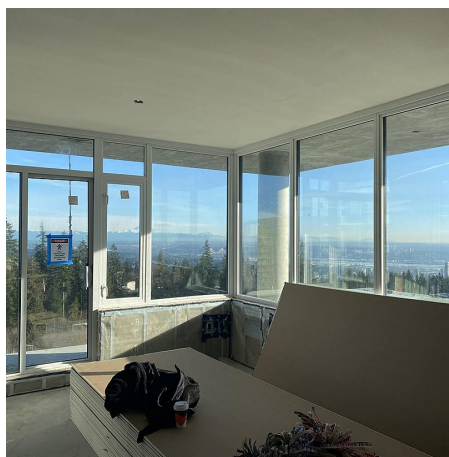
\$461.69 Maintenance Fees

## FEATURES

Year Built: 2022

Views: South: Mount Baker & Metrotown

Listed By: RE/MAX Crest Realty



rennie