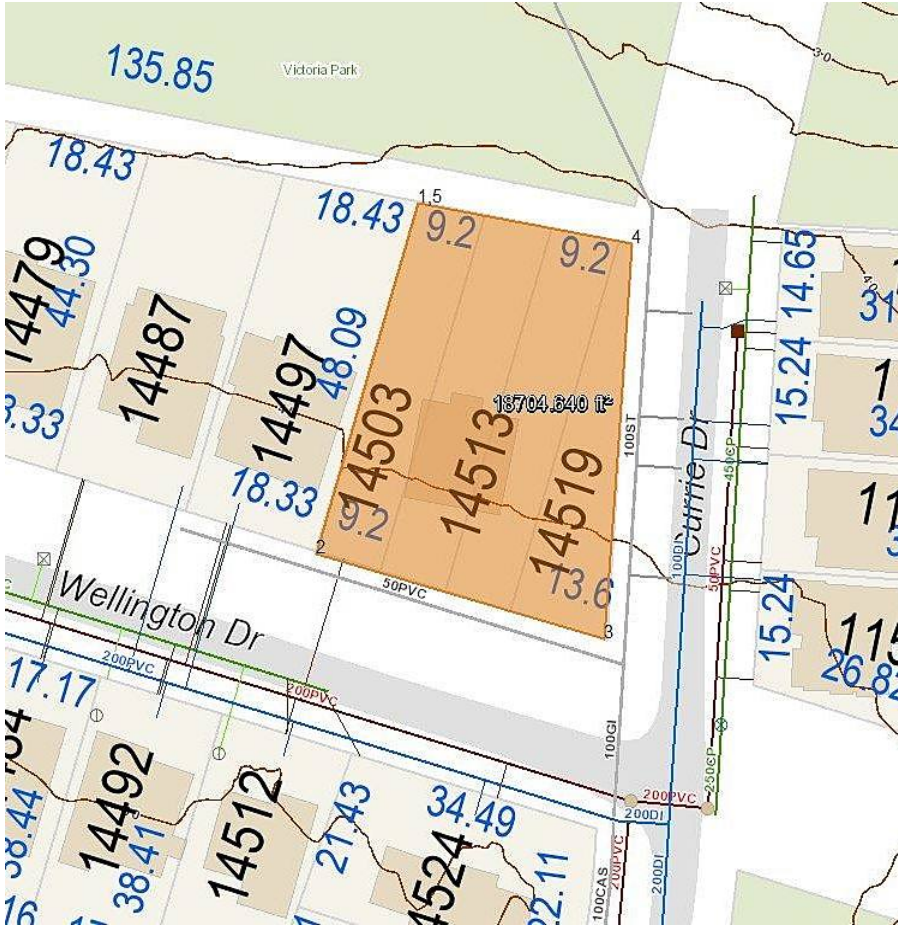


# 14513 Wellington Drive, Surrey

\$1,450,000



developer, investors, gardeners or extended families combining household. this property has something for everyone. subdivision potential. 2-3 lot may be possible, or buy and hold. 3 properties, 4 PID's almost 19000 sq ft lot 2 street frontages. nearly 2200 sq ft 4 bdrm 2 full bath 2 kit. extremely livable bsmt home with 24'6"x25' detached storage/workshop. fully fenced and private gardeners delight yard with raised beds, koi ponds and beautiful mature landscaping in peaceful location backing on greenbelt. property must be sold together with 14503 Wellington R2654443 and 14519 Wellington R2654445 total asking price is \$2,250,000

## KEY INFORMATION

MLS® R2654442

Residential Detached

Bolivar Heights

4 Bedrooms

2 Bathrooms

2,160 SF

9,853 SF Lot

## FEATURES

Year Built: 9999

Listed By: RE/MAX 2000 Realty

