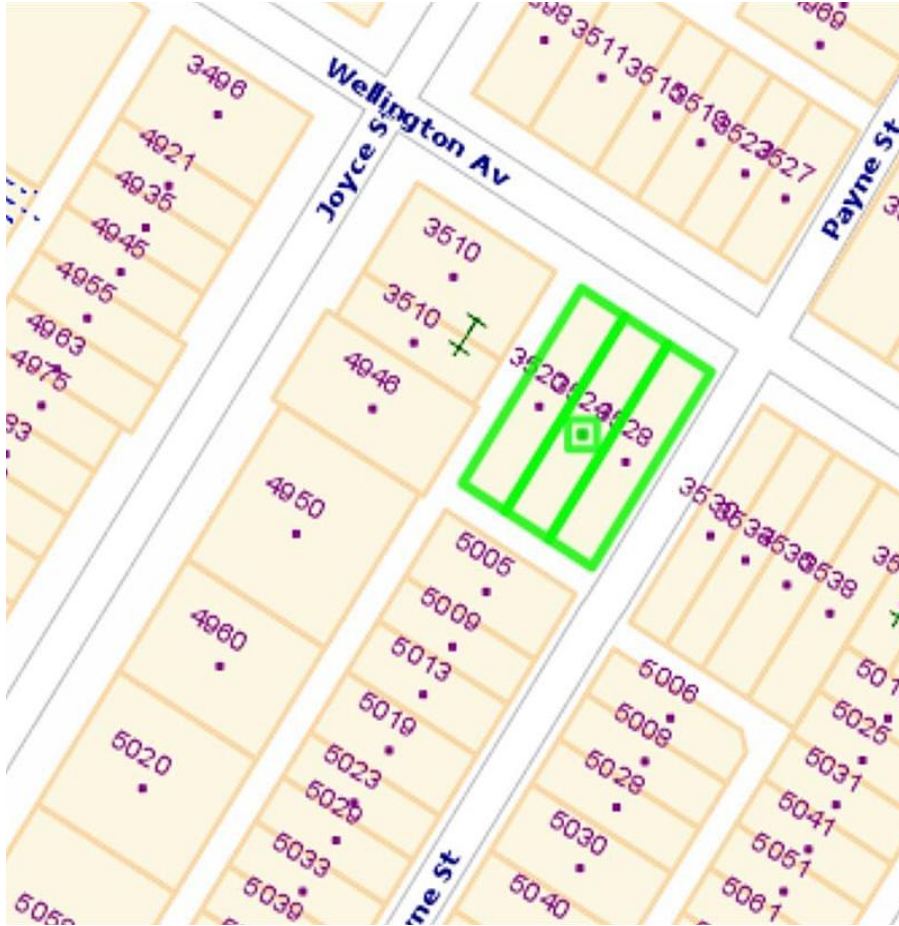


# 3524 Wellington Avenue, Vancouver

\$4,500,000



LAND ASSEMBLY. Entire 3500 block of Wellington (3520 & 3524 & 3528) - 3 houses on 3 lots totalling approximately 14,355 sq ft. Rezoned by the city and can be built 4 storeys residential. Steps away from Joyce-Collingwood skytrain station, all major banks, restaurants, grocery stores, schools and much more nearby! Call today for more information.

## KEY INFORMATION

MLS® R2654792

Residential Detached

Collingwood

6 Bedrooms

3 Bathrooms

2,056 SF

4,785 SF Lot

## FEATURES

Year Built: 1912

Listed By: RE/MAX City Realty



rennie