

5931 129a Street, Surrey

\$2,100,000



North Panorama Ridge !!! Easy accessibility to all major routes, park with a running track, recreation, shopping & both level of schools. Spacious & well built home offers 7 bdrm + Den, 5 & 1/2 bath, huge family room with access to the sun deck, Granite counter tops, Radiant heating, 2+1 bdrm suites rented at \$2300 p/m, 2 laundry rooms, extensive use of moulding, Lots of lights including new LED soffit Pots plus so many other features. Back lane access, double garage with lots of street parking in the front. Offers anytime!

KEY INFORMATION

MLS® R2654597

Residential Detached

Panorama Ridge

7 Bedrooms

6 Bathrooms

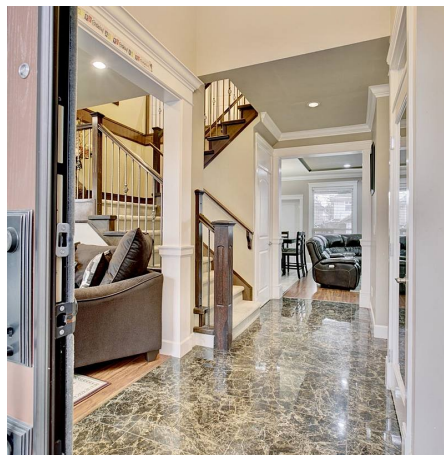
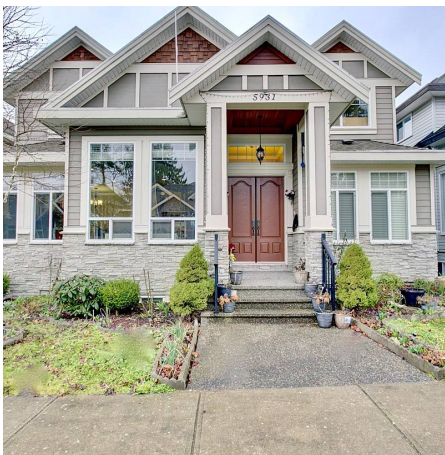
3,556 SF

3,446 SF Lot

FEATURES

Year Built: 2011

Listed By: Bal Realty Services Incorporated



rennie