

# 33394 Westbury Avenue, Abbotsford

\$1,699,999



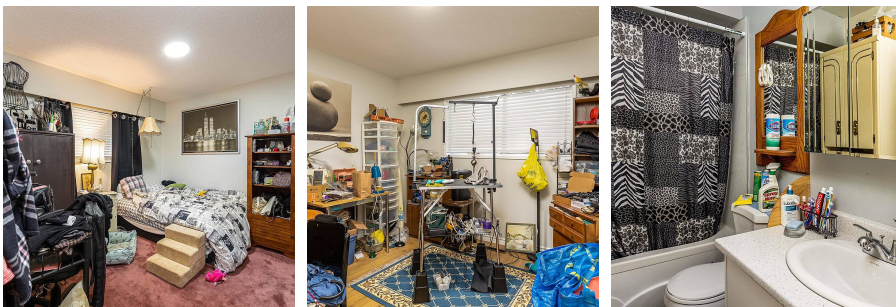
INVESTOR ALERT! Nice duplex in great neighbourhood, on lot with subdivision potential,. Possible 3 LOT SUBDIVISION , or 1 DUPLEX and ONE SINGLE FAMILY LOT or 2 LOTS WITH SUITES. Buyer to confirm subdivision options with the City of Abbotsford. All measurements are approximate. Please verify if important. Both sides have been recently updated, Rented month to month for total of \$4700 per month.

## KEY INFORMATION

MLS® R2656110  
Multifamily  
Central Abbotsford  
8 Bedrooms  
4 Bathrooms  
3,310 SF  
10,098 SF Lot

## FEATURES

Year Built: 1972  
Listed By: Royal LePage Global Force Realty



rennie