

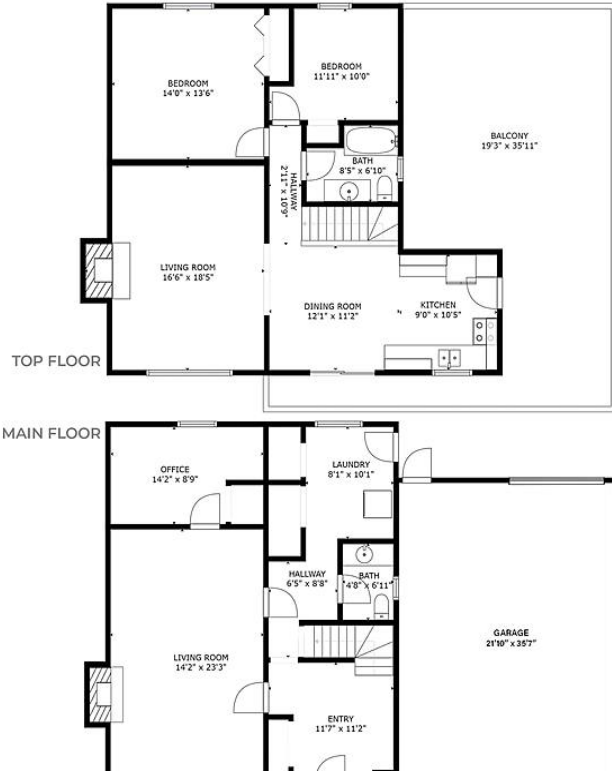
14654 108 Avenue, Surrey

\$1,920,000



c: 604 448 2002
f: 604 293 8887
e: marco@marcovince.com
w: www.marcovince.com

TOP FLOOR AREA: 942 sq ft
MAIN FLOOR AREA: 900 sq ft
TOTAL INTERIOR AREA: 1,842 sq ft
BALCONY AREA: 620 sq ft
GARAGE AREA: 780 sq ft



Development Potential - This 2 storey home offers 3 beds, 2 baths & 780 sf double wide garage all while sitting on a flat property and the OCP allows for apartments. Property is 8,056 sf (60 x 132) and current house is 1,900 sf of living space plus the massive garage. Although the development potential is fantastic, the existing house is perfect for a family home. Rare opportunity to own a piece of high development land with an existing house in good condition. Neighbouring house also for sale.

KEY INFORMATION

MLS® R2656636

Residential Detached

Guildford

3 Bedrooms

2 Bathrooms

1,842 SF

8,056 SF Lot

FEATURES

Year Built: 1972

Listed By: Oakwyn Realty Encore