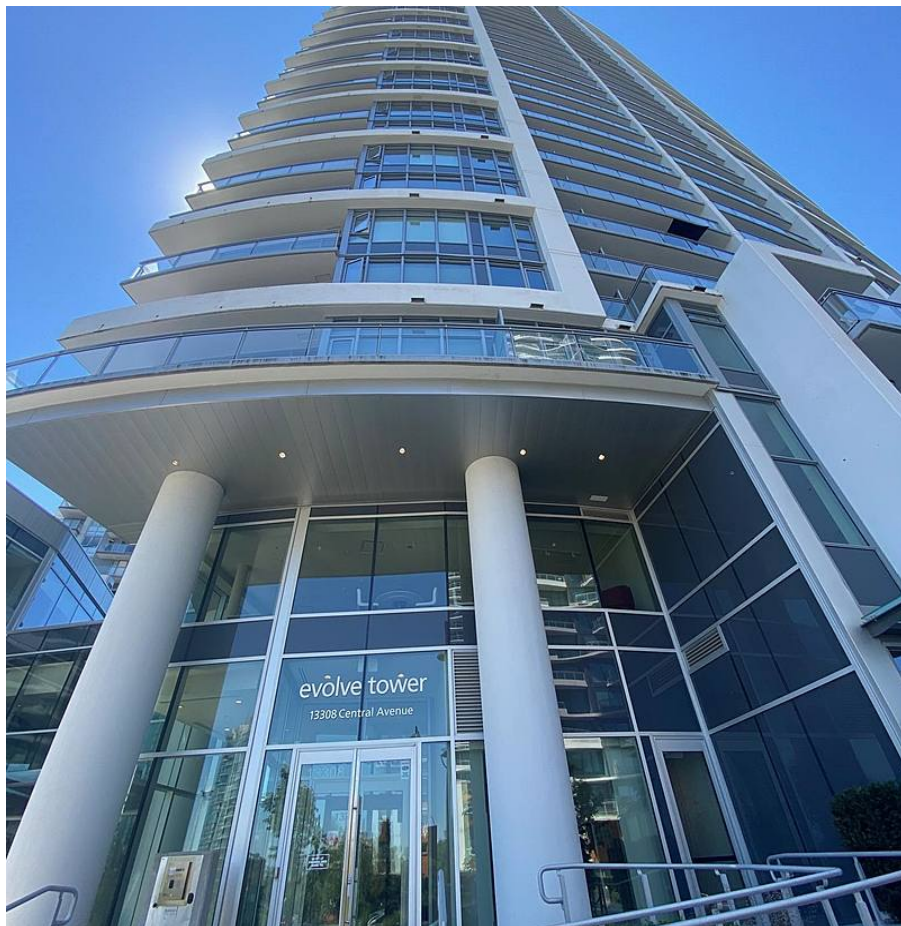


1605 13308 Central Avenue, Surrey

\$618,000



Evolve! Almost brand new unit. 2 beds plus den and 2 full bath. Elegant master en-suite with shower, tub and double sinks. West Facing unit with a huge balcony 6'x21' to enjoy the mountain and sunset. The open concept layout. It is located in the heart of Surrey central within walking distance to Skystrain, SFU, KPU, and surrey central mall. It has an activity room and a large gym. 1 parking and 1 storage space. It is 820 sqft on the developers' floor plan. Easy to show.

KEY INFORMATION

MLS® R2657197

Residential Attached

Whalley

2 Bedrooms

2 Bathrooms

805 SF

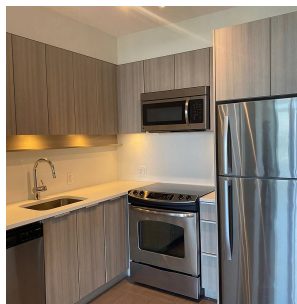
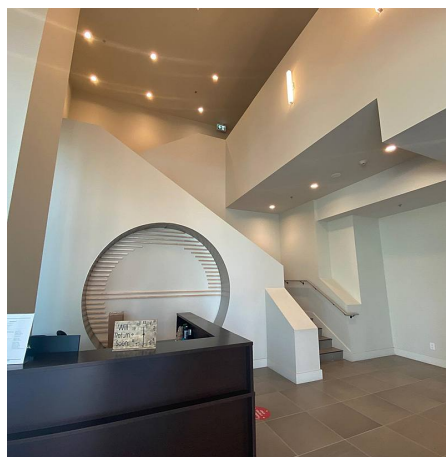
\$526.16 Maintenance Fees

FEATURES

Year Built: 2019

Views: CI

Listed By: Team 3000 Realty Ltd.



rennie