

1005 1180 Pinetree Way, Coquitlam

\$778,000



Beautiful and spacious unit close to everything ! Just steps away from Lincoln Center sky-train station, Coquitlam Shopping Mall and Henderson Mall. Fantastic layout with 3 bedrooms and two full bathrooms with huge living space. Spacious Chef inspired kitchen. This unit has 3 balcony with beautiful city and mountain views, comes with 2 parking and one lockers Showing available on each Saturday between 1:30 - 4:00pm By appointment only. Rental not allowed, Pets not allowed

KEY INFORMATION

MLS® R2657480

Residential Attached

North Coquitlam

3 Bedrooms

2 Bathrooms

1,450 SF

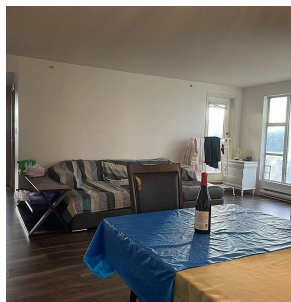
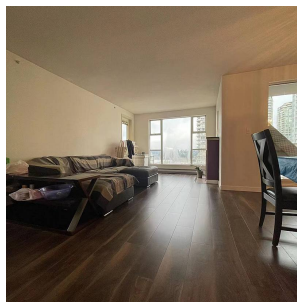
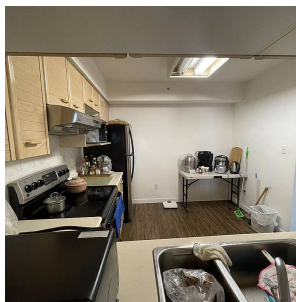
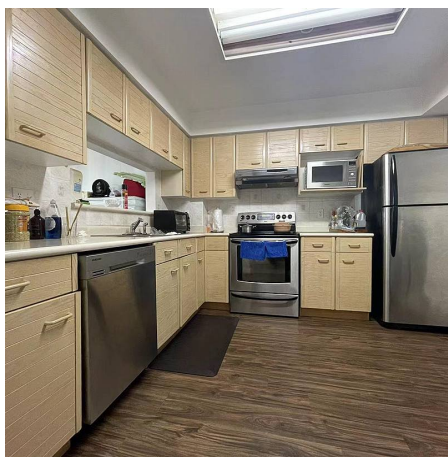
\$494.84 Maintenance Fees

FEATURES

Year Built: 1992

Views: BEAUTIFUL CITY/MOUNTAIN VIEW

Listed By: Team 3000 Realty Ltd.



rennie