

# 104 10250 155a Street, Surrey

\$949,000



Rarely available in Creekside Estates! This IMMACULATE, well maintained 3 bed/3 bath home has been kept in PRISTINE condition. Located on a NO-THROUGH street, this family oriented complex is the one you have been looking for this townhome feels like a home with over 1400 sqft of living space & side-by-side DOUBLE garage. Main floor boasts VAULTED ceilings in the living room, dining room large enough to host your family dinners. Walk-out to your private patio overlooking the creek & green space. Generous sized master w/en suite plus 2 add'l bedrooms & laundry make up the top floor. Convenient location that is w/in walking distance to transit, parks & shopping. Access to HWY 1 is around the corner.

## KEY INFORMATION

MLS® R2657461

Residential Attached

Guildford

3 Bedrooms

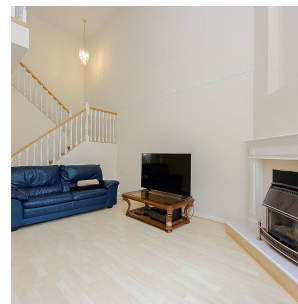
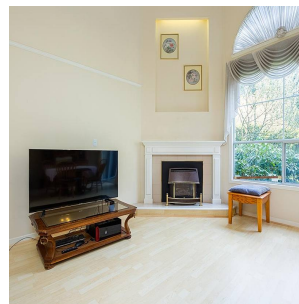
3 Bathrooms

1,406 SF

## FEATURES

Year Built: 1992

Listed By: Lighthouse Realty Ltd.



rennie