

# 13280 21a Avenue, Surrey

\$3,100,000



GORGEOUS Brick Manor situated in the prestigious neighbourhood of Bridlewood. Beautiful corner 14,000sqft property with bright Southern exposure and manicured gardens. Double height foyer with a curved staircase sets the tone of sophistication. Formal Living Room and Dining Rooms for gatherings and a Great Room along the back of the home offering garden views. Timeless kitchen with ample storage and a breakfast nook. Unique hot tub room tucked away on the main for year-round enjoyment, and a private home office. 4 spacious bedrooms above plus a Rec. Room above the garage. Triple garage tucked away with lots of parking! A beautiful home exuding quality, taste and privacy. Steps to Ocean Park Village, Ray Shepherd Elementary, and Elgin Park Secondary Schools.

## KEY INFORMATION

MLS® R2657462

Residential Detached

Elgin Chantrell

5 Bedrooms

4 Bathrooms

4,346 SF

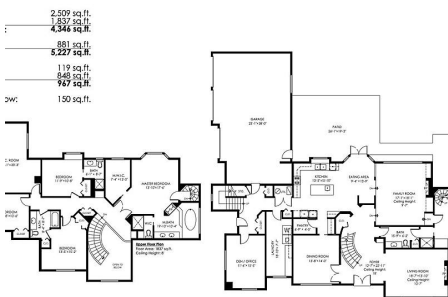
13,982 SF Lot

## FEATURES

Year Built: 1991

Listed By: Macdonald Realty (Surrey/152)

13280 21A Ave, Surrey



rennie