

13209 Marine Drive, Surrey

\$2,999,000



Exceptional panoramic ocean view. 9213 sqft. Both the main/upper level all can enjoy ocean view. Very well maintained by owners, with updated kitchen, maple wood cabinets, granite counter top, hardwood floor, new bathrooms, 3 newer fireplaces, all the doors, tile roof. House was designed with open plan, large windows. Shows as a 10. Total 4 bedroom and 4 bathrooms, over 4000 sqft, a great home for family use in excellent condition. Good investment property too. Open House: 2-4pm (Sat) MAY 7.

KEY INFORMATION

MLS® R2658365

Residential Detached

Crescent Beach

4 Bedrooms

4 Bathrooms

4,512 SF

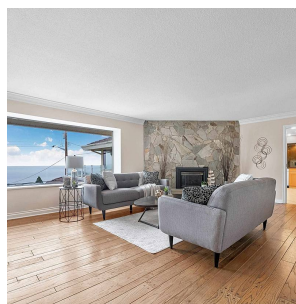
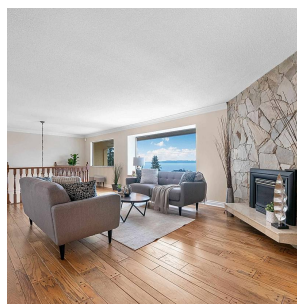
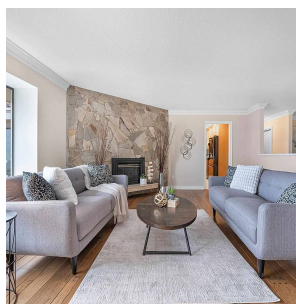
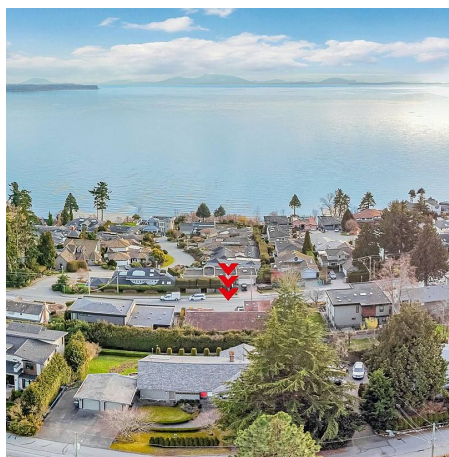
9,213 SF Lot

FEATURES

Year Built: 1981

Views: OCEAN VIEW

Listed By: Sutton Group-West Coast Realty



rennie