

1560 Chippendale Court, West Vancouver

\$5,980,000



Located in the heart of Canterbury! Spectacular unobstructed ocean views from all three levels. 2014 redesigned & renovated custom residence offers the epitome of LUXURY LIVING! Over 5,000 sq.ft of exceptional design sits on a 13,000 sf.ft lot with a gently sloping driveway, completely leveled private backyard & manicured landscaping. Extensive renovations including gourmet kitchen, granite countertops, Nu heat flooring, new paintings, blinds and windows, updated electric Large living & dining areas, and a huge master suite with an ultra-luxurious spa-like ensuite and large walk-in closet. all 4 bedrooms are suites & facing south. Centrally located to all amenities, close to Rec Centre, private schools, Hollyburn Country Club.

KEY INFORMATION

MLS® R2658760

Residential Detached

Canterbury

4 Bedrooms

6 Bathrooms

5,015 SF

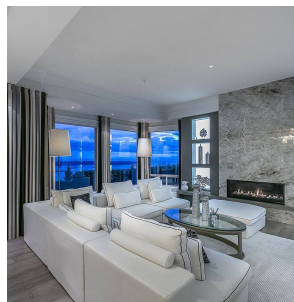
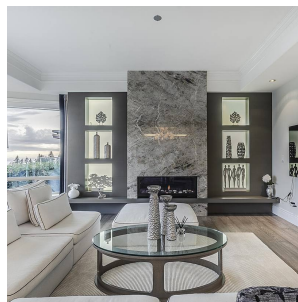
13,078 SF Lot

FEATURES

Year Built: 1996

Views: OCEAN & CITY

Listed By: eXp Realty



rennie