

8922 150 Street, Surrey

\$1,849,000



Welcome to this beautiful large 2 storey home on a 8,700 square feet lot, featuring 3 large bedrooms on the main plus a open concept kitchen/living & dining room. Below you get an optional one for 2 bedrooms suite with side access. This well kept home is perfect for a new family or for investors, it is centrally located to schools, transit & a park in front of the home. The exterior driveway is perfect for RV parking & amp driveway space to park up to 10 cars, the neighborhood is quiet, friendly and has a few newly constructed million dollar homes. A Must See!!!!

KEY INFORMATION

MLS® R2658794

Residential Detached

Bear Creek Green Timbers

4 Bedrooms

3 Bathrooms

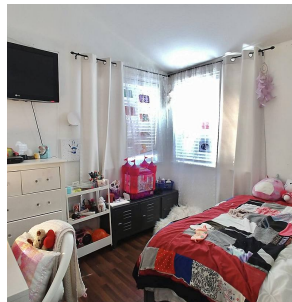
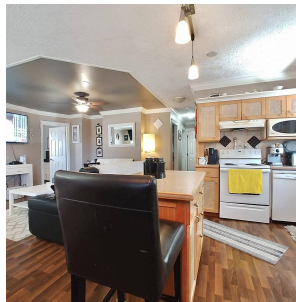
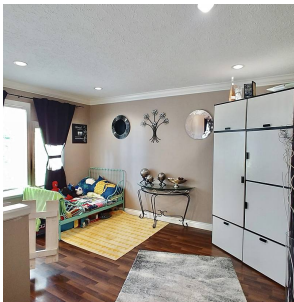
2,100 SF

8,793 SF Lot

FEATURES

Year Built: 1977

Listed By: eXp Realty (Branch)



rennie