

# 3061 W Osprey Drive, Abbotsford

\$1,349,000



Well-kept basement entry home on west side of Abbotsford close to Mt. Lehman exit. The house comes with 3 bedroom , 2 bathroom on main floor and 2 bedroom legal suite RENTED FOR \$1,200. House has 8 years old roof and water tank was replaced 2 years back. Double garage for your toys and fenced yard is perfect for kids to enjoy!

## KEY INFORMATION

MLS® R2657643

Residential Detached

Abbotsford West

5 Bedrooms

3 Bathrooms

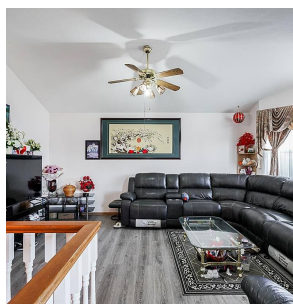
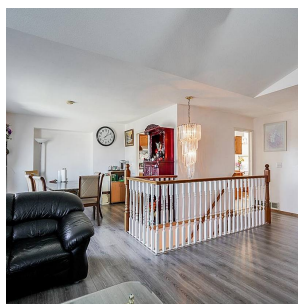
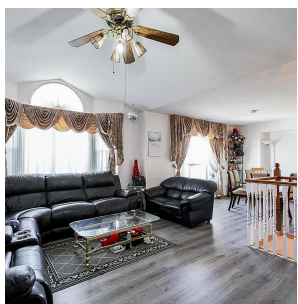
2,155 SF

6,598 SF Lot

## FEATURES

Year Built: 1989

Listed By: Sutton Group-Alliance R.E.S.



rennie