

# 1106 Lombardy Drive, Port Coquitlam

\$1,199,900



This is the one you've been waiting for!! This 4 bedroom 2.5 bath home with extra flex space is awaiting your ideas! The main floor features formal living room with gas fireplace, formal dining room leading towards your open concept kitchen with eating area and family room with gas fireplace, and slider leading to your private fenced backyard. You have a 2 pc guest bathroom, bedroom, laundry and access to your double car garage! Upstairs has an office space and open flex room plus 2 full bathrooms and 3 bedrooms. The large master has a walk in closet and full ensuite! Close to schools, transit & recreation! Roof (2010), hw tank (2011) Call to book your private appointment!

## KEY INFORMATION

MLS® R2658945

Residential Detached

Lincoln Park

4 Bedrooms

3 Bathrooms

2,431 SF

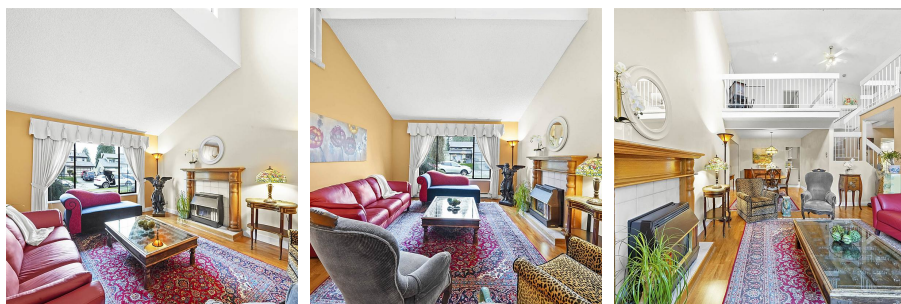
5,390 SF Lot

## FEATURES

Year Built: 1980

Views: MOUNTAIN

Listed By: rennie & associates realty ltd.



**Ryan Wong** PREC\*  
604.551.7966  
rwong@rennie.com  
rennie.com/ryanwong

**rennie**