

20739 Camwood Avenue, Maple Ridge

\$2,379,312



ALERT to developers, builders and investors!!!
Centrally located, elementary and secondary schools, shopping, transit, athletic park all within walking distance. Current zoning is RS-1 and future potential for medium density multifamily apartment building up to 2.5 FSR . Check with City Hall. Pls follow COVID-19 PROTOCOL. MUST SEE this land assembly of 1.2 Acre (52000 sqft) and asking price is \$17M !!!

KEY INFORMATION

MLS® R2659259

Residential Detached

Southwest Maple Ridge

3 Bedrooms

1 Bathroom

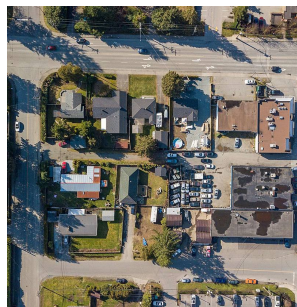
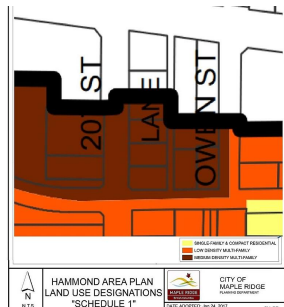
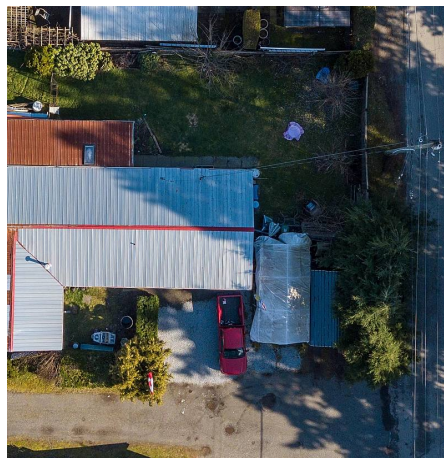
1,321 SF

7,254 SF Lot

FEATURES

Year Built: 1969

Listed By: Homelife Benchmark Realty (Langley) Corp.



rennie