

8747 Milton Drive, Surrey

\$1,799,000



Located on a charming street in Fleetwood, this partially renovated home is perfect for the growing family or savvy investor (Future development potential in the draft Fleetwood Plan)! This home provides 3 bedrooms on the main floor with a bonus bedroom and rec room in the basement with separate entry, which could easily be converted into a suite! Recent upgrades include new roof, flooring, kitchen/appliances and washrooms. Located on large 8,400 SF lot situated on a charming street close to Future Skytrain Station, schools, shopping, transit and all major routes and recreation. Don't miss out, call now for your private tour!

KEY INFORMATION

MLS® R2658320

Residential Detached

Bear Creek Green Timbers

4 Bedrooms

2 Bathrooms

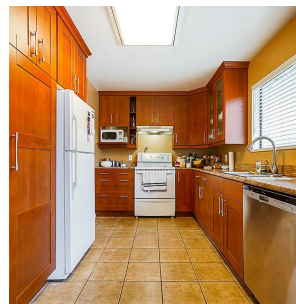
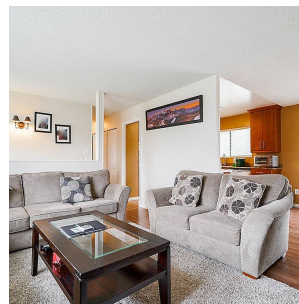
1,663 SF

8,400 SF Lot

FEATURES

Year Built: 1977

Listed By: Century 21 Coastal Realty Ltd.



rennie