

160 46150 Thomas Road, Chilliwack

\$749,900



This gorgeous unit sits in the upscale townhome community of BASE 10. Sleek, modern exterior design with open concept interior allows for loads of natural light. A great family starter home or investment as rentals are allowed here. Beautifully finished throughout with stainless steel appliances and contemporary fixtures. air conditioning will keep you cool all summer long. 3 bedrooms on the main floor with a spa like master ensuite. Use the space below for a hobby room, office or gym. Superbly located with all your favourite amenities within walking distance. Close to schools, parks and a myriad of shopping options.

KEY INFORMATION

MLS® R2659670

Residential Attached

Chilliwack

3 Bedrooms

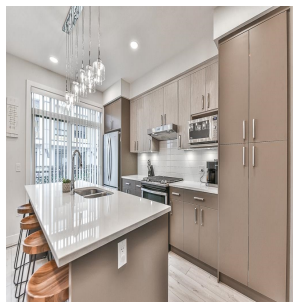
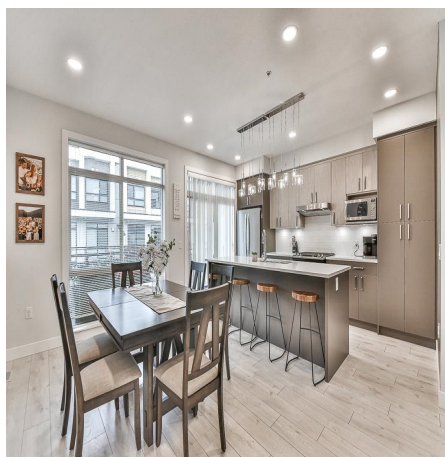
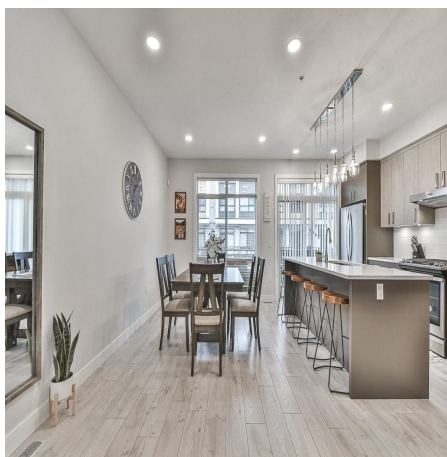
3 Bathrooms

1,487 SF

FEATURES

Year Built: 2021

Listed By: rennie & associates realty ltd.



Rachel Blades

778.834.6666

rblades@rennie.com

rennie.com/rachelblades

rennie