

# 11828 207th Street, Maple Ridge

\$2,296,000



ALERT to developers, builders and investors!!!  
Centrally located, elementary and secondary schools, shopping, transit, athletic park all within walking distance. Current zoning is RS-1 and future potential for medium density multifamily apartment building up to 2.5 FSR . Check with City Hall. Pls follow COVID-19 PROTOCOL. MUST SEE this land assembly of 1.2 Acre (52000 sqft) and asking price is \$17M !!!

## KEY INFORMATION

MLS® R2659294

Residential Detached

Southwest Maple Ridge

2 Bedrooms

1 Bathroom

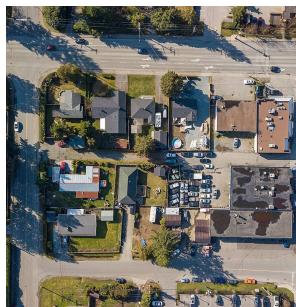
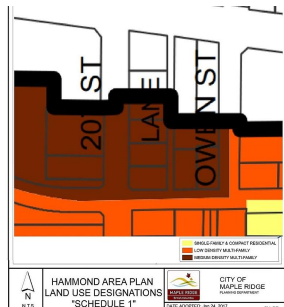
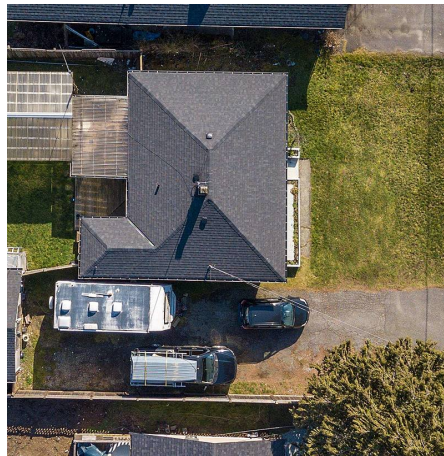
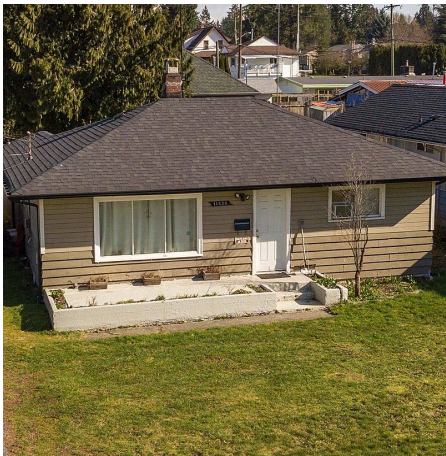
836 SF

7,000 SF Lot

## FEATURES

Year Built: 1953

Listed By: Homelife Benchmark Realty (Langley) Corp.



rennie