

# 1501e 1365 Davie Street, Vancouver

\$1,824,900



Welcome home to the beautiful R plan in the East Tower at Mirabel. This 2 bed / 2 bath NW corner home boasts stunning views of the City, Mountains and Ocean. Built by Marcon with over 36 years of construction expertise and thoughtfully designed by award winning Alda Pereira. Seamless indoor/outdoor living on your large balcony with natural gas hook-up, perfect for soaking up the dazzling city lights. Chef inspired kitchens with Armony Cucine cabinetry, Wolf/Sub-Zero appliances, and large island. High-efficiency heating and air conditioning system for year-round comfort. Sophisticated master en-suites boast double vanities and Italian marble throughout. Unbeatable West End location only steps to shopping, parks and the seawall. 2 parking and 1 storage included!

## KEY INFORMATION

MLS® R2660244

Residential Attached

West End

2 Bedrooms

2 Bathrooms

955 SF

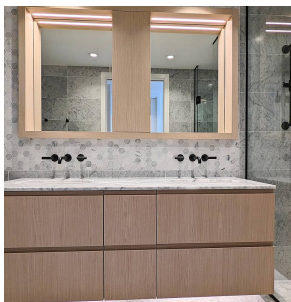
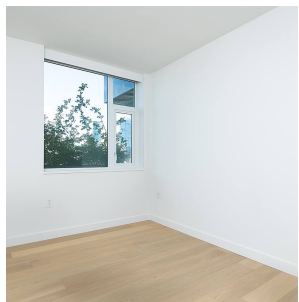
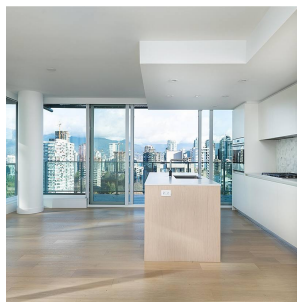
\$550.88 Maintenance Fees

## FEATURES

Year Built: 2021

Views: Ocean, City, Mountains

Listed By: rennie & associates realty ltd.



**Candice Ko**  
604.729.7842  
cko@rennie.com  
rennie.com/candiceko



**Julian Proctor**  
604.220.6924  
jproctor@rennie.com  
rennie.com/julianproctor

**rennie**