

12833 64a Avenue, Surrey

\$1,850,000



First time on the market since 1995 this extremely desirable Panorama Ridge home sits on a 7500 sqft lot in a lovely cul-de-sac. Surrounded by luxury of conveniences from walking distance elementary and high schools to stores and transportation. Easy access to highways for day to day commutes. 5 bedroom and 3 bath with basement suite this has income potential! Enjoy the Vaulted ceiling hovering over numerous renovations from wide plank hard floors, carpet, windows, potlights, interior paint, new driveway, garage door and so much more. The double garage has an EV station. This home has been loved and well maintained throughout the years and is a wonderful opportunity for a new family to nestle in and enjoy the perfect location to accommodate day to day lifestyle.

KEY INFORMATION

MLS® R2660523

Residential Detached

West Newton

5 Bedrooms

3 Bathrooms

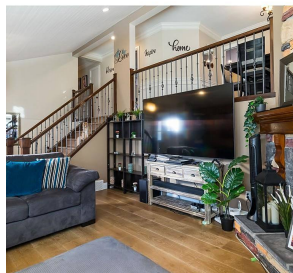
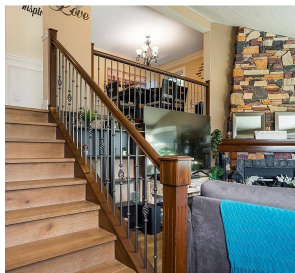
2,678 SF

7,512 SF Lot

FEATURES

Year Built: 1986

Listed By: RE/MAX Crest Realty



rennie