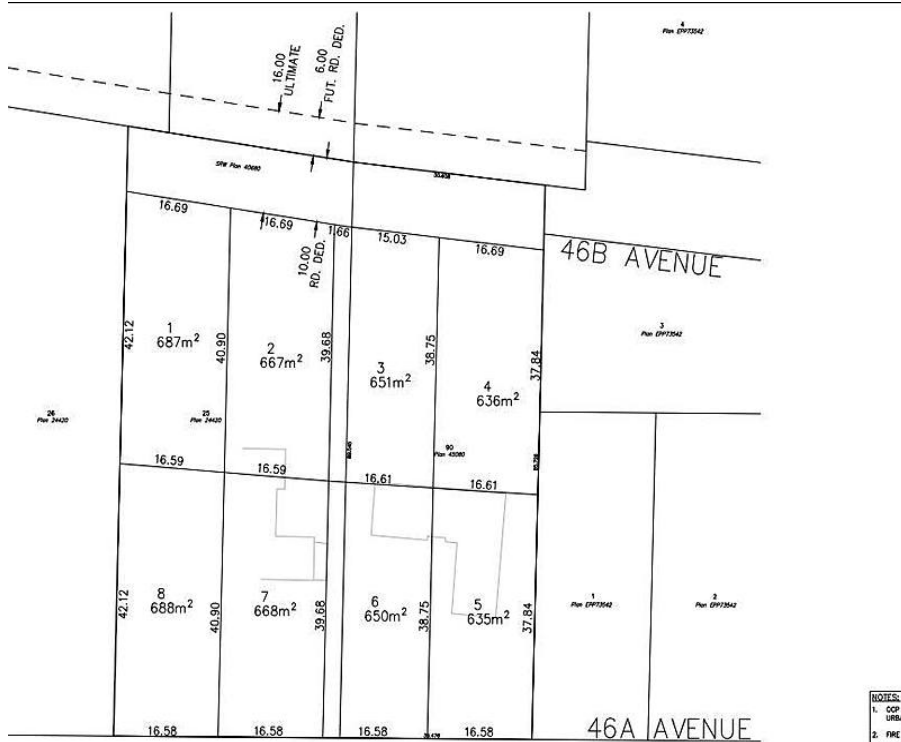


# Lt.2 20525 46a Avenue, Langley

\$1,499,000



Location! Location! Location! Build your dream house (2 level plus underground basement) on 7000sqft ready to build lot and raise your family in the upland area of Langley, walking distance to Upland Elementary/Uplands Montessori school. Pet lovers have access to Off leash dog park at 7mins walking distance. Less then 2kms to Newlands Golf Club. Developer will also provide the option to build your dream house to suit your needs. Please ask for details!!

### KEY INFORMATION

MLS® R2660271

Land Only

Langley City

0 Bedrooms

0 Bathrooms

0 SF

7,000 SF Lot

- NOTES:
1. OCP R URBAN
  2. FIRE A
  3. APPROD ORESO ORESO
  4. LOT LJ FOR R
  5. EXIST
  6. SERVAC
  7. CURRE

<p><b>CitWest Consulting Ltd.</b> No.101-2050 KING GEORGE BLVD., SURREY, BC, V3V 7Y3 TELEPHONE 604-591-2213 FAX 604-591-5518 E-MAIL: office@citwest.com</p>	<p>BEARING PONTE DEVELOPMENTS LTD. 6283 197 STREET, LANGLEY, BC V2Y 9H8, PH: 604-661-0710</p>	Scale: 1"
		<p>PRELIMINARY LOT LAYOUT</p> <p>SUBDIVISION AT 20525 &amp; 20541 46A AVENUE, LANGLEY, BC</p>

### FEATURES

Listed By: YPA Your Property Agent