

532 9456 134 Street, Surrey

\$799,000



Living at Quinn by Porte Communities is fast or slow, quiet or vibrant! Absorb the energy of one of Metro Vancouver's fastest growing cities, picnic on some green space in neighboring Queen Elizabeth Meadows Park, or zip away to another exciting destination on rapid transit. This CORNER UNIT 3 bed and 2 bath with BIG balcony NW facing unit has plenty of sunlight and is the perfect new home for your family! Great for first time home buyers and investors who missed out on the release of Quinn. Steps away from Surrey Memorial Hospital and couple minutes away from the Surrey Central Hub. Anticipated completion is set for the Summer of 2024

KEY INFORMATION

MLS® R2660609

Residential Attached

Queen Mary Park

3 Bedrooms

2 Bathrooms

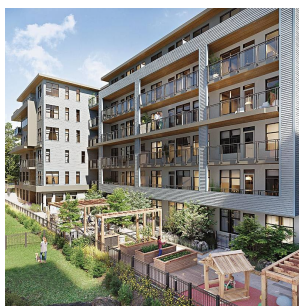
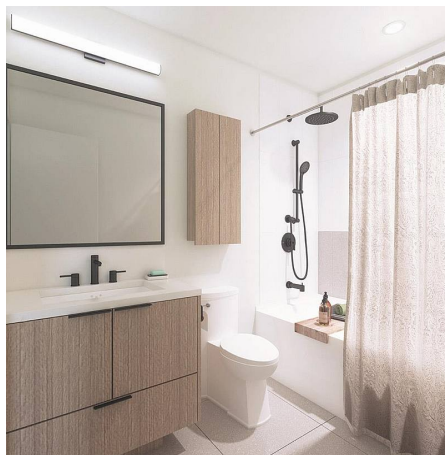
1,159 SF

\$0.00 Maintenance Fees

FEATURES

Year Built: 2024

Listed By: Oakwyn Realty Ltd.



THAN 100-1000 sq ft



rennie