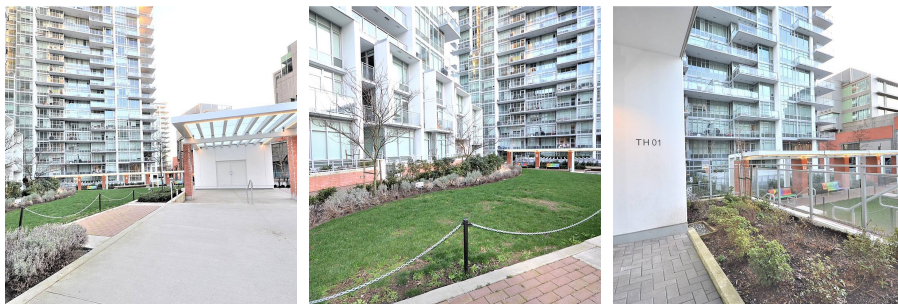
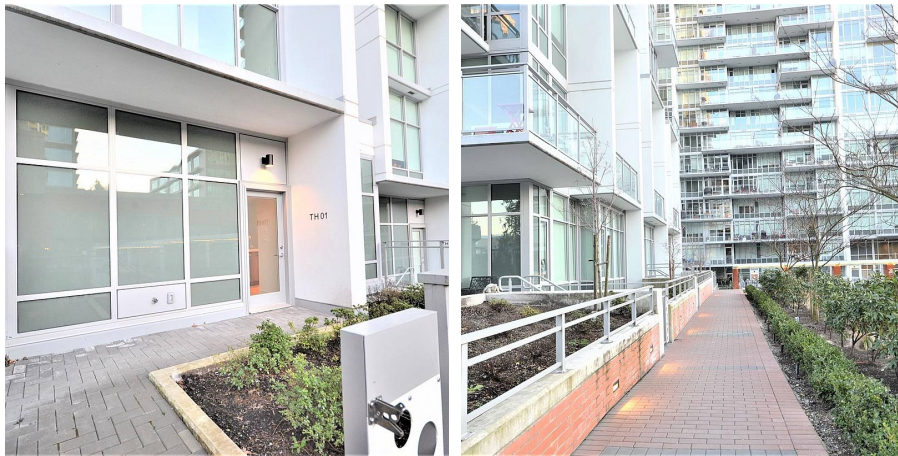


Th1 258 Nelson's Court, New Westminster

\$1,238,800



Penthouse on the ground!! "Columbia" at Brewery District! 1 of only 2 townhomes in complex. 3 bdrm 3 full bath Open Layout high ceiling . Never Available Concrete luxury townhome. 1455 sqft open layout. 2 levels plus amazing roof deck. Master bedroom is out of a magazine with soaring 30 foot ceilings and a wall of glass to match , Unparalleled open spaces and views front and back..More Views all oversize windows and roofdeck with water/gas hookups. Front yard Patio facing large green spaces.Backyard common sitting area and BBQ's 40 feet from your rear patio!! Bonus 2 side by side parking spots by elevators ! Amazing amenities. Walk to Restraunts,Grocery store, 1 block south of Royal Columbia Hospital and nearby skytrain OPEN HOUSE SUNDAY MAY 15. 2-4 pm

KEY INFORMATION

MLS® R2660712

Residential Attached

Sapperton

3 Bedrooms

3 Bathrooms

1,455 SF

FEATURES

Year Built: 2020

Views: Mountain, Court Yard

Listed By: Sutton Group-West Coast Realty

rennie