

# 32739 Fraser Crescent, Mission

\$1,069,000



Investors Alert ! 6600 sq ft lot zoned for Multi-Unit Duplex (MD465). Designated Attached Multi-Unit Residential within the Official Community Plan. Potential for future development and recommended for high density TOWNHOMES or APARTMENTS. Check with City for confirmation. Existing townhouses at back. Possible land assembly with neighbouring lots. Major development projects in the area including Maple View Heights Apartments, large scale townhouses, and high rises. Good condition Rancher with 2 bedrooms & 1 bath up and kitchen with large eating area. 3 additional rooms in basement. Single car garage. A fantastic holding property with steady rental income. Central downtown location with easy access to highway & shops.

## KEY INFORMATION

MLS® R2661217

Residential Detached

Mission

2 Bedrooms

1 Bathroom

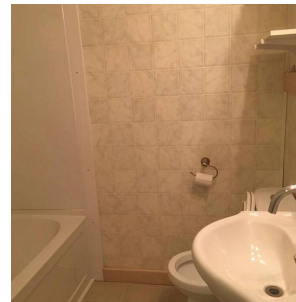
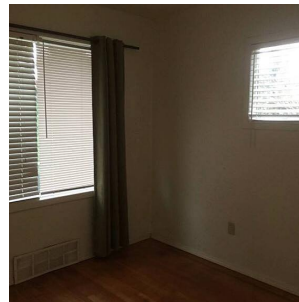
1,686 SF

6,600 SF Lot

## FEATURES

Year Built: 1952

Listed By: RE/MAX Westcoast



rennie