

511 209 E 7th Avenue, Vancouver

\$1,149,900



Welcome home to this 2 bed/2 bath SW corner unit at the Ellsworth in Mount Pleasant. Built in 2018 by reputable local developer Chard Developments, this home features refined spaces, designer kitchens with full sized appliances, NuHeat flooring in bathrooms, air conditioning, a south facing balcony and one parking stall. Thoughtful smart home upgrades take this property to the next level of modernity and convenience. Amenities include an incredible common 3500 sf rooftop patio with views of the downtown skyline (perfect for watching the sunset), dedicated bike storage and a dog wash station for your furry friend. Easy access to Skytrain this is the ultimate Main Street location close to awesome restaurants, shops and entertainment the area is known for. Rental and Pets allowed.

KEY INFORMATION

MLS® R2661514

Residential Attached

Mount Pleasant

2 Bedrooms

2 Bathrooms

974 SF

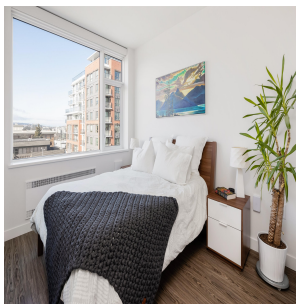
\$602.36 Maintenance Fees

FEATURES

Year Built: 2018

Views: Westerly City/Mountain View

Listed By: rennie & associates realty ltd.



Paul Wong PREC*
604.716.0483
pwong@rennie.com
rennie.com/paulwong



Samson Danniels
778.989.2454
sdanniels@rennie.com
rennie.com/samsondanniels

rennie