

17761 68 Avenue, Surrey

\$1,850,000



PROVINCETON by RAB Properties; Highly desirable Clayton area, steps away from Adams Road Elementary School. New skytrain route coming nearby. This 3,756 sq ft house backs on to a protected greenspace providing ultimate backyard privacy. Fully suite-able 1200 sq ft 2 bedroom basement-this could be the perfect mortgage helper. Open-concept main living area with 1 bedroom on the main floor. Designer kitchen featuring quartz countertops, 4-inch crown moulding above cabinetry, stained-hardwood staircase to match floors, black metal railing spindles, and elegant 5 1/4 inch baseboards. Original owner, immaculately kept. Forced air heating, 2 gas fireplaces on main floor. 8'11" ceiling height. This one won't last!!
*Disclaimer: 2 bedrooms virtually staged by Cotala.

KEY INFORMATION

MLS® R2662271

Residential Detached

Cloverdale

6 Bedrooms

4 Bathrooms

3,756 SF

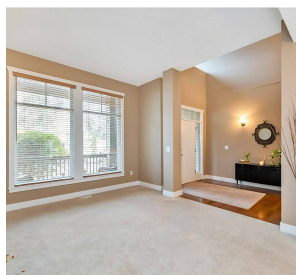
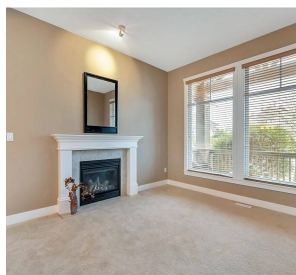
5,134 SF Lot

FEATURES

Year Built: 2006

Views: Mountains and Greenbelt

Listed By: rennie & associates realty ltd.



Rachel Blades

778.834.6666

rblades@rennie.com

rennie.com/rachelblades

rennie