

1301 5629 Birney Avenue, Vancouver

\$1,552,900



Welcome to Ivy on the Park by Wall Group of Companies! Visit our move-in ready homes at the most luxurious residential development in Wesbrook Village. Conveniently located within the tranquil surroundings of forest and parks, just minutes away from the University of British Columbia campus, and within walking distance to everyday conveniences. Each home is beautifully finished and equipped with insuite air-conditioning/heating. Parking and storage locker included. Enjoy a wide range of amenities including daily concierge service, resident buiding manager, club lounge and outdoor BBQ area, music lounge, meeting room, fitness facilities, and outdoor garden.

KEY INFORMATION

MLS® R2662344

Residential Attached

University

2 Bedrooms

2 Bathrooms

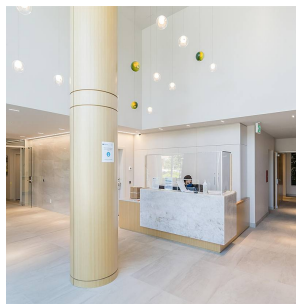
1,019 SF

\$596.23 Maintenance Fees

FEATURES

Year Built: 2021

Listed By: rennie & associates realty ltd.



Mimi Chau PREC*
604.375.6288
mchau@rennie.com
rennie.com/mimichau

rennie