

# 17370 1 Avenue, Surrey

\$1,898,000



Kept like new-the perfect family home in Summerfield, One of the finest neighborhoods of South Surrey. Beautiful 3 storey 3141sft 4 bedrooms and 4 bathrooms living space, Outstanding design & open plan with 10 ft ceiling on main floor. Featuring large Maple Kitchen, quartz counters, extra large den, great room. Upper spacious master nedroom with Spc ensuite, W/I closet. 2 large additional Bedrooms up plus an open den. Extensive crown moulding throughout home. Engineered hardwood floors. High efficiency fireplace and boiler. Radiant/Baseboard hot water heat,air conditioning, central vacuum. Fu1ly finished basement, suite potential. Totally landscaped sunny soutfl facing fenced yard. Close to the US border, Walking distance to Dufierin ParR, Douglas Elementary and Peace Portal Golf Club.

## KEY INFORMATION

MLS® R2662126

Residential Detached

Pacific Douglas

4 Bedrooms

4 Bathrooms

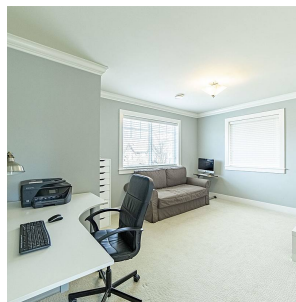
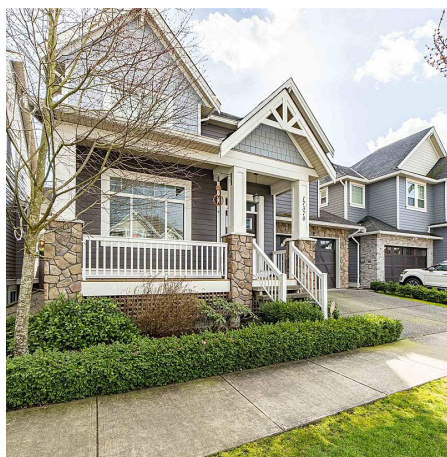
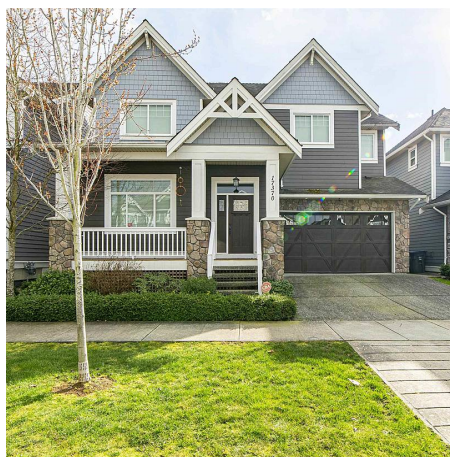
3,141 SF

3,568 SF Lot

## FEATURES

Year Built: 2013

Listed By: Nu Stream Realty Inc.



rennie