

# 29 12880 Railway Avenue, Richmond

\$1,320,000



**THE PERFECT RANCHER.** Located in Steveston South and only a minutes stroll to the waterfront boardwalk. This bright and well kept one level home with attached garage is ideal for the downsizing couple. All principal rooms are very open with vaulted ceilings and lots of windows. The living room will accommodate your house size furniture and has a beautiful gas fireplace to take the chill off. Gleaming engineered hardwood floors abound. The south facing kitchen, eating area, and family room open onto a big patio and garden and the gorgeous park like setting beyond. A gardener and bird watchers delight. Two generous size bedrooms and recently updated ensuite make for comfortable living.

## KEY INFORMATION

MLS® R2662614

Residential Attached

Steveston South

2 Bedrooms

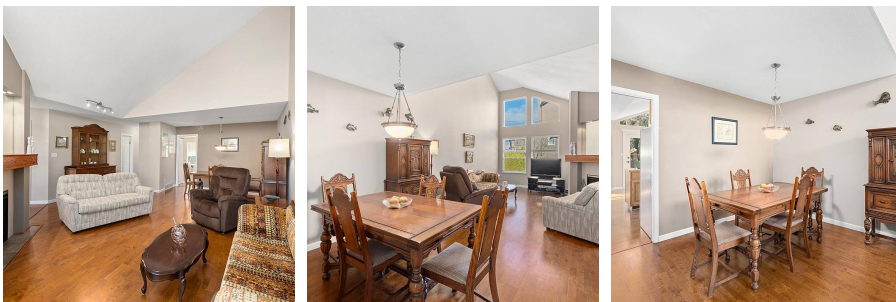
2 Bathrooms

1,418 SF

## FEATURES

Year Built: 1987

Listed By: Macdonald Realty Westmar



**rennie**