

10 9899 Steveston Highway, Richmond

\$1,549,999



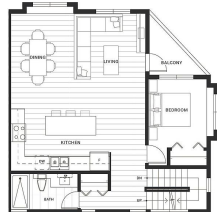
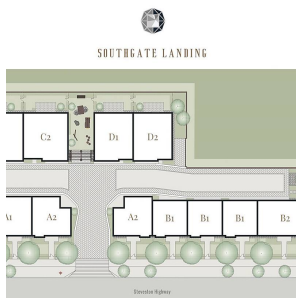
ONE OF ELEVEN SPACIOUS AND LUXURIOUS EUROPEAN STYLE TOWNHOUSES LOCATED AT SOUTH ARMS WITH MODERN AMENITIES. THIS DUPLEX STYLE TOWNHOUSE IS CLOSE VICINITY TO ALL DAILY NEEDS. BANKS, ESSENTIAL STORES, SCHOOLS, QUICK AND EASY TRANSIT ACCESSIBILITY. FINE RESTAURANTS AND CAFES TO CHOOSE FROM. LOTS OF OUTDOOR ACTIVITIES, GOLFING, CYCLING, NATURE WALKS. SOLAR ROUGH IN FOR FUTURE USE. VISIT OUR WEBSITE AT WWW.SOUTHGATELANDING.CA FOR MORE INFO AND REGISTRATION.

KEY INFORMATION

MLS® R2662482
Residential Attached
South Arm
4 Bedrooms
4 Bathrooms
1,750 SF

FEATURES

Year Built: 2022
Views: MOUNTAIN
Listed By: Sutton Group-Alliance R.E.S.



Measurements should only be necessary without prior notice, any measurements provided are approximate only. ©2022. The quality code



rennie