

52023 Yale Road, Rosedale

\$1,899,900



RARE FIND! 4.16 acres in ROSEDALE w/ a 4559 sq ft MACHINE SHOP & beautiful 2707 sq ft 4 bdrm home! The shop was fully permitted and built with no expenses spared; 3 phase, 4 wire, 120/208 volts (200amp dedicated service), 4150 sq ft on the main w/ 14' door, 6' deep mechanics pit, 2 tone electric crane, 5 horsepower compressor w/ hoses, 2 piece bathroom, & kitchenette. Upper loft in shop is 409 sq ft. The family home was renovated & had an addition in 2002; 3 bdrms & 1 bathroom on main & HUGE master suite up feat. private patio, 4 piece washroom, & walk-in closet. Dedicated 100amp service to house, forced air heating, new HWT. **EXTREMELY WELL MAINTAINED PROPERTY** & fully fenced. Floorplan & added features sheet available.

KEY INFORMATION

MLS® R2663022

Residential Detached

Chilliwack

3 Bedrooms

2 Bathrooms

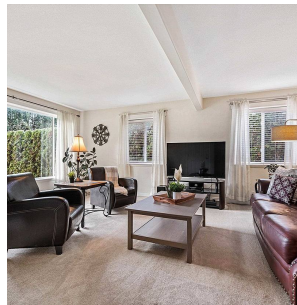
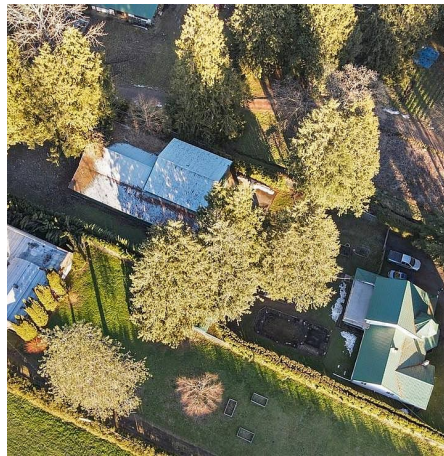
2,707 SF

FEATURES

Year Built: 1951

Views: Mountains

Listed By: Century 21 Creekside Realty



rennie