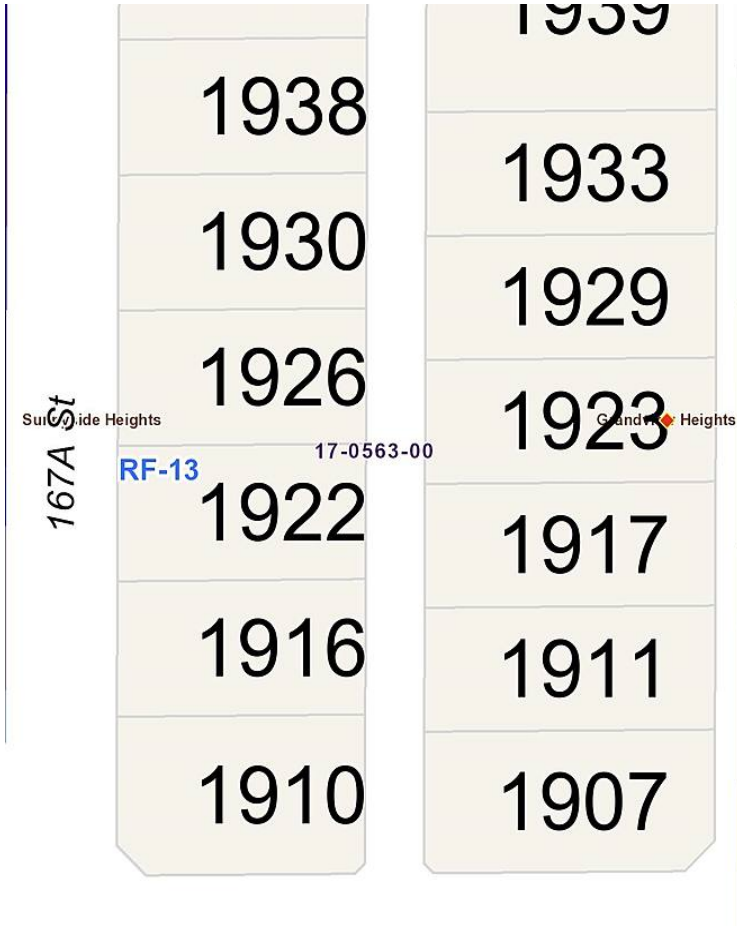


# 1922 167a Street, Surrey

\$1,475,000



New subdivision of 13 RF13 lots that will accommodate 2 storey (plus basement) homes. Highly coveted South Surrey location in prime Grandview Heights neighbourhood close to Southridge Private School and walking distance to Grandview Heights elementary (2 blocks away) and Grandview secondary school. Minutes to Morgan Crossing, Grandview Corners, Grandview Heights Aquatic Centre. Builders will be required to follow a statutory building scheme/design guideline.

## KEY INFORMATION

MLS® R2662133

Land Only

Pacific Douglas

o Bedrooms

o Bathrooms

o SF

3,634 SF Lot

## FEATURES

Listed By: Homelife Benchmark Realty Corp.  
(White Rock)