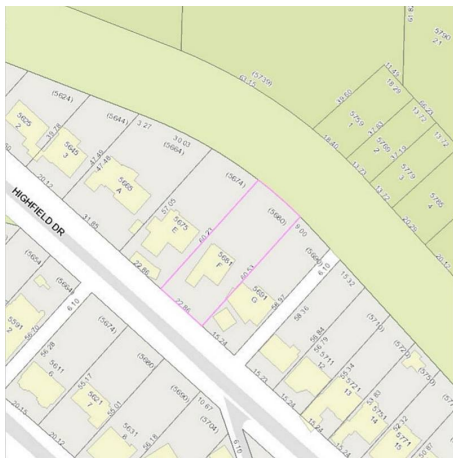
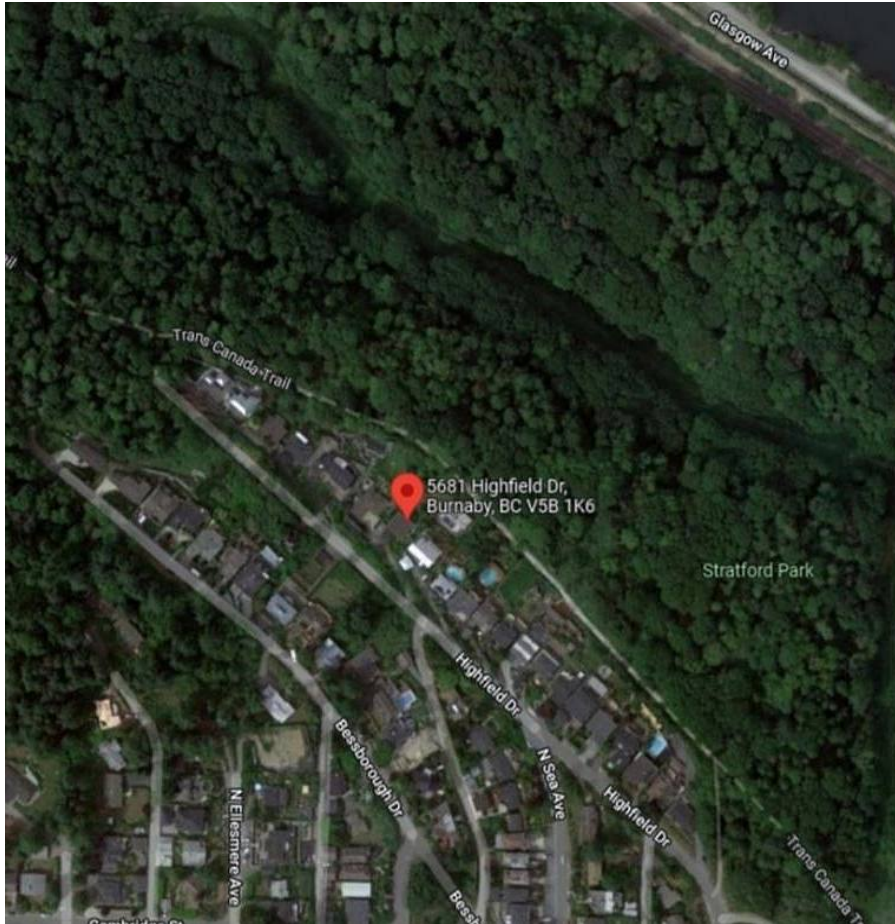


# 5681 Highfield Drive, Burnaby

\$2,688,888



Capitol Hill, Burnaby - This one of a kind home on a view lot offers nearly 15,000 SqFt of land. The home measures over 2,500 SqFt. A large terrace deck off of the main living and master bedroom areas offer you treed privacy as well as views of The Burrard Inlet, North Shore Mountains, and the Indian Arm. Whether its viewing skiers on Grouse in the winter or views of the marine activity throughout the year - you get it all here! The convenient location of this view property enables you quick access to all levels of schools (Capitol Hill Elementary, Burnaby North Secondary, Simon Fraser University), shopping, transit, major access routes are just moments away and the TransCanada Trail.

## KEY INFORMATION

MLS® R2663290

Residential Detached

Capitol Hill

3 Bedrooms

1 Bathroom

2,033 SF

14,850 SF Lot

## FEATURES

Year Built: 9999

Views: WATER, MOUNTAIN

Listed By: RE/MAX Blueprint Realty