

# 12922 59 Avenue, Surrey

\$1,699,900



This Beautiful home is tucked away in one of Surrey's most desirable neighborhoods. With 4 spacious bedrooms on the upper level, this is the perfect home for young growing families! The main floor features a beautiful open-concept kitchen that opens up to a large family room and eating area. French doors off of the kitchen area to access a huge deck making this an entertainer's dream! On the lower level, there is a spacious 2 bedroom mortgage helper! The home also features back lane access to a 2 car detached garage, private low maintenance backyard, and plenty of street parking

## KEY INFORMATION

MLS® R2663384

Residential Detached

Panorama Ridge

6 Bedrooms

4 Bathrooms

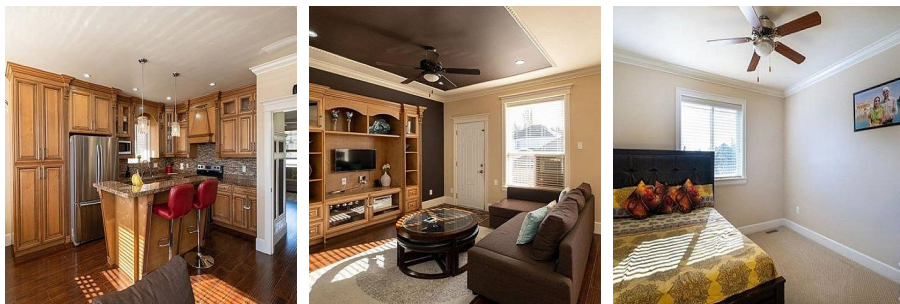
2,548 SF

2,843 SF Lot

## FEATURES

Year Built: 2010

Listed By: Saba Realty Ltd.



rennie