

8885 Jedburgh Place, Surrey

\$3,688,888



Stunning 3 level ground up LUXURY CUSTOM BUILT house with 7082 SF finished area sits on 7885 SF lot in the desirable quiet family-oriented Queen Mary Park neighbourhood! Close to elementary and high schools, SFU and future UBC campus are nearby! Investment hot spot! House features with 10 bedrooms + 8 full baths + 2 half baths + double garage and 7 open parking spaces containing 2 X 2 bedrooms mortgage helpers! High end finishing throughout this house! Theatre room downstairs with built-in bar! Total 6 ensuites which are 1 on 2nd floor and 5 on 3rd floor! Security camera monitor, intercom speaker as well as central air conditioning and vacuum system throughout the house. Welcome to check it out, invest and enjoy your life! Don't miss it!

KEY INFORMATION

MLS® R2663278

Residential Detached

Queen Mary Park

10 Bedrooms

10 Bathrooms

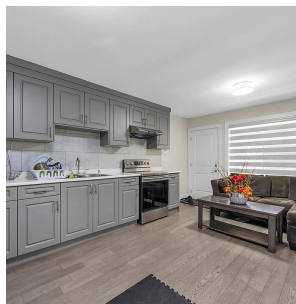
7,082 SF

7,885 SF Lot

FEATURES

Year Built: 2017

Listed By: Unilife Realty Inc.



rennie