

701 3200 Corvette Way, Richmond

\$1,048,000



Viewstar inside, water view two-bedroom unit. Miele appliances, engineered hardwood floors, air conditioning, winter oak interior color with open kitchen and dining area. Richmond gateway project, The future(2022) Capstan way Skytrain is just across the street, close traffic to YVR airport, Vancouver. Comprehensive building amenities for your use include an indoor swimming pool, party rooms, study lounge, rooftop garden with a huge outdoor area.

KEY INFORMATION

MLS® R2663392

Residential Attached

West Cambie

2 Bedrooms

2 Bathrooms

842 SF

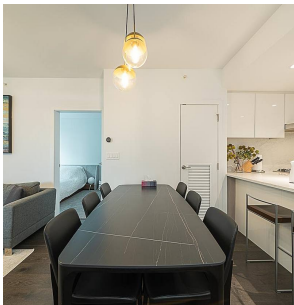
\$441.00 Maintenance Fees

FEATURES

Year Built: 2021

Views: WATER

Listed By: Pacific Evergreen Realty Ltd.



rennie