

9383 Slater Street, Mission

\$10,000,000



Silverdale Phase 1 in Mission's "Central Neighborhood Plan". This 18.13 acre property sits on top of the largest and most exciting planned development area in BC's Lower Mainland. This property has two homes! The first is a rancher that offers three bedrooms. The second is a four bedroom rancher with a basement that over looks the gorgeous valley views. Enjoy this paradise for years to come while knowing that in the future will be brighter as development starts to come up the hill. A holding property like no other! The City is undertaking a large planning process for Silverdale to guide future growth and development, and to plan a sustainable and complete community designated for urban growth.

KEY INFORMATION

MLS® R2663104

Residential Detached

Mission West

3 Bedrooms

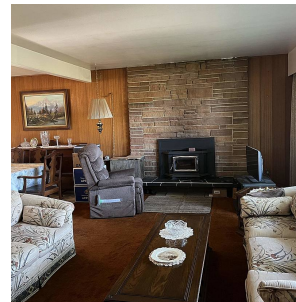
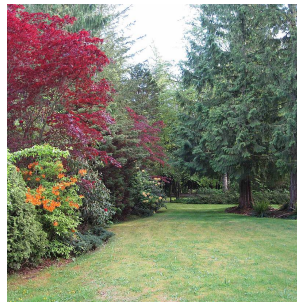
2 Bathrooms

1,427 SF

FEATURES

Year Built: 1965

Listed By: Lighthouse Realty Ltd.



rennie